

PAN Forum - 2024
Deaccessions as a Service

Ian Bogus
Aaron Krebeck

High Density Storage Withdrawal Study Group (2020-2021)

Ian Bogus (ReCAP)

Amy Boucher (Harvard)

Mike Gibbons (ReCAP)

David Keifer (Johns Hopkins)

Aaron Krebeck (WRLC)



Harvard Model (at ReCAP)

- 12 aisle modules
- 4.2 MM items (includes archival boxes)
OR
- 5.2 MM books
- Construction cost/book: ~\$5-\$6
- Current inventory: 17.7MM
 - Permanently deaccessioned ~50k (<0.3%)

Efficiency is the name of the game

- FY23: accessioned ~500k items
- Adding 1 second per accession requires 140 work hours



CHEST

103
JAN.-MAR.
1993
INCLUDES

CHEST

102
OCT.-DEC.
1992
& SUPPLEMENTS

CHEST

99
JAN.-MAR.
1991
&

JOURNAL
OF THE
AMERICAN
PODIATRY
ASSOCIATION

70
JAN - JUN
1980

JOURNAL
OF THE
AMERICAN
PODIATRY
ASSOCIA-
TION

70
JUL - DEC
1980

BRAIN
RESEARCH

636
1994

BRAIN
RESEARCH

666
1994

BRAIN RESEARCH
664 1994

BRAIN
RESEARCH

633
1994

BRAIN
RESEARCH

668
1994

BRAIN
RESEARCH

635
1994

ACTA
ONCOLOGICA

27
1988

Two Methods for Deaccessions

Books to Trays:

New books for accession are taken into the shelving facility and then to the trays containing deaccessions. New books are fit into the gaps created and cataloging is done in the stacks.

Trays to Books:

Trays containing deaccessions are retrieve en masse and brought to the processing area. New books are fit into the gaps created and all cataloging is done in the processing area.



Test type	Min	Items	Trays	Shelves	Ladders	Items/ Min	Items/ Tray	Items/ Shelf
Books to Trays	30	60	12	1	1	2.00	5.00	60.00
Books to Trays	40	60	45	12	4	1.50	1.33	5.00
Books to Trays	50	60	53	25	12	1.20	1.13	2.40
Books to Trays	35	60	12	1	1	1.71	5.00	60.00
Books to Trays	55	60	45	12	4	1.09	1.33	5.00
Books to Trays	50	60	53	25	12	1.20	1.13	2.40
Trays to Books	33	60	12	1	1	1.82	5.00	60.00
Trays to Books	46	60	45	12	4	1.30	1.33	5.00
Trays to Books	53	60	53	25	12	1.13	1.13	2.40

Washington Research Library Consortium

Established in 1987 by universities in the DC-metro area
to provide cost-effective library & information services


- American University
- Catholic University of America
- Gallaudet University
- George Mason University
- George Washington University
- Georgetown University
- Howard University
- Marymount University
- University of the District of Columbia

Preservation of Resources

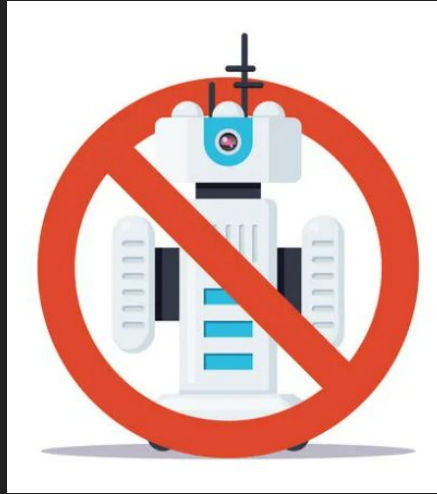


For Many Years We Assumed That Deaccessions Were Impossible Due to the “Void Creation Problem”

“You can’t do deaccessions in a Harvard high-density facility because of the [void-creation problem]...**BUT** my partner institutions sure would love it if I could!”



No Robots, No Gap Databases



Trying to keep track of which trays had voids and the size of those voids would have been a time-consuming administrative nightmare.

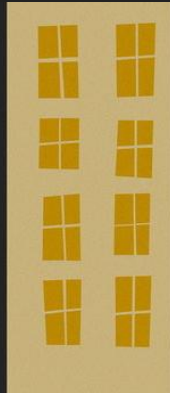
From Pilot to Large Scale Test

PILOT


- 250 Items Deaccessioned
- All work done by SCF Supervisor
- No billing
- Time and progress tracked informally


LARGE TEST

- 5000+ Items Deaccessioned
- Work done by SCF technicians
- Project must be billed
- Time and progress tracked via processing site to confirm accurate cost data.



Begin Tracking Work Hours

Admin 

 Deaccession Clock-In: Tammy Hennig

Select Project






- Catholic Lima
- Deaccession Project for George Mason
- GT Books
- GW Special Collections

View Progress

Projects

TRACK TIME

NEW PROJECT

Project	University	Goal	Staffing Hours	Staffing Cost	Value (Billing)	Ratio
GT Books 12/01/2021 - 02/01/2022	Georgetown University	2/2 (100%) 	--	\$	\$3.40	INF:1 ★★★★★ High Performance
Catholic Lima 01/02/2021 - 02/28/2022	Catholic University	4/4 (100%) 	--	\$	\$6.80	INF:1 ★★★★★ High Performance
GW Special Collections Boxes 01/01/2021 - 02/28/2022	George Washington University	5/5 (100%) 	1	\$21.00	\$8.50	0:1 ☆☆☆☆☆ Below Expectations
Deaccession Project for Gallaudet Books 02/14/2022 - 02/28/2022	Gallaudet University	305/322 (95%) 	6.5	\$136.50	\$518.50	4:1 ★★★★★ High Performance
Deaccession Project for George Mason 11/01/2021 - 06/01/2022	George Mason University	5446/5440 (100%) 	78.5	\$1,648.50	\$9,258.20	6:1 ★★★★★ High Performance

Deaccessions Workflows Explained

Partner-side

1. Contact WRLC to coordinate and plan the delivery of books, boxes or other materials to be added to the SCF.
2. Determine the preferred disposition of the deaccessioned items (recycled, returned to campus, donated, etc.)
3. Provide WRLC with the barcodes, for all items to be deaccessioned.
4. Provide the total count of items that will be sent to replace the items to be deaccessioned. The number of items to be accessioned should be 10-15% more than the number of items to be deaccessioned.

Deaccessions Workflows Explained

WRLC-side

1. WRLC staff generates a spreadsheet showing barcodes, locations, size, and COUNT of barcodes per tray.
2. Open boxes of new materials for accession and begin sizing. Save the boxes for future use if necessary.
3. Retrieve trays of the same size as the books that get sized. Highlight on the list of tray locations that are retrieved.
4. Pull deaccessioned books out of trays.

Filling the voids with new material

1. Fill the unfilled trays with new books. New books should be flipped around so staff would know which one to process.
2. Process new books and fill out tray/shelf location & cross check forms on the SCF Processing website.
3. Pack the withdrawn books in boxes and send them back to the owning library, Better World Books, recycling service, etc.

And that's it...

Thanks for listening
Q&A?

Safe data access and editing



Almagic - A Suite of Alma API Applications

Welcome to Almagic!

Almagic is an application platform built on the open source Grima library created by [Katherine Lybarger](#) at the University of Kentucky. Almagic allows you to perform tasks on your data without using the Ex Libris interface and user roles. First you need to [login](#) to the service and then select any of the links below to use that tool. If you have any questions, contact Aaron Krebeck at WRLC.

Almagic User Tools

- [\[Login\]](#) -- Login to the Almagic service
- [\[Logout\]](#) -- Logout of the Almagic service
- [\[List Users\]](#) -- List and manage current users (Admins only)

Display or Print records

- [\[PrintBib\]](#) -- display bib record in printable web page
- [\[PrintHolding\]](#) -- display holding record in printable web page
- [\[Hierarchy\]](#) -- view bib/mfhd/items in hierarchy view
- [\[SCFLookup\]](#) -- Use barcode from your IZ to display full record of item in SCF IZ
- [\[Print SCF Details\]](#) -- Use barcode to look up row/shelf location and other SCF info

Edit Records

- [\[EditHoldingsStatement\]](#) -- Edit the 866 subfield a holdings statement in a holding record.



Safe data access and editing



Almagic - A Suite of Alma API Applications

Add Item Call Number

Barcode

32882017562508X

Item Call Number

R37M07S13T01 BJ

SUBMIT

Inserting the WD code

FROM

R37M07S13T01 BJ

TO

R37M07S13T01 **WD**