

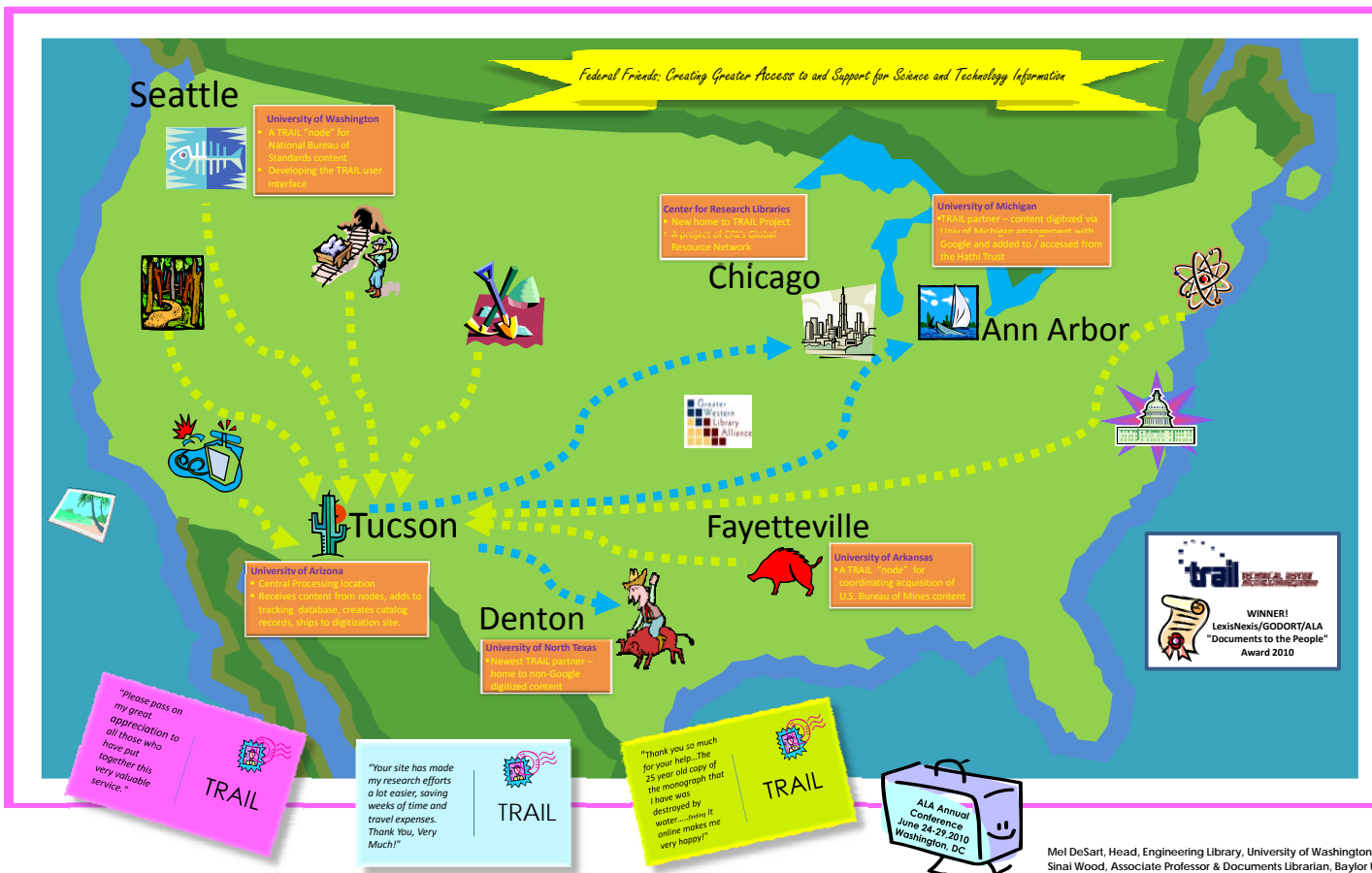
Blazing a TRAIL: Digitizing and Preserving Legacy U.S. Government Technical Reports

TRAIL is a collaborative effort to identify, digitize, archive, and provide persistent and unrestricted access to federal technical reports generally issued prior to 1975. TRAIL began under the auspices of the Greater Western Library Alliance (GWLA), but in 2010 became the newest Global Resource Network at the Center for Research Libraries (CRL).

Within TRAIL, "nodes", such as at the University of Arkansas, arrange for content to be shipped to the central processing facility at the University of Arizona, where a catalog record is created for each report and is supplied to OCLC.

Reports not requiring special handling are shipped from Arizona to the University of Michigan and are digitized via Michigan's existing arrangement with Google. Digitized reports are then deposited in the Hathi Trust. Reports requiring special handling (with maps, foldouts, etc.) are sent to the University of North Texas for digitization and are stored as part of the UNT Libraries digital collections.

A user interface under construction at the University of Washington will search both the Hathi Trust and UNT for TRAIL content and will return a single results set to a query from a TRAIL user, complete with links to the full text of each report.



To date, TRAIL participants have acquired, scanned and cataloged well over 20,000 individual reports, totaling roughly 2 million pages of content!

Samples of TRAIL content can be found at the pilot project web site at: digioll.manoa.hawaii.edu/techreports/ and in the UNT Digital Library, at: <http://digital.library.unt.edu/>

Although TRAIL is now affiliated with the Center for Research Libraries, membership in CRL is not a requirement for participation in the project. In fact, we hope that our new affiliation with CRL will lead to significantly increased participation in the project. If you'd like to know more about TRAIL, see <http://www.crl.edu/grn/trail> and the associated pages.

While any organization may contribute needed content to TRAIL, participating more fully in the project (being a voting member, having input on content, serving on a project committee or working group) will require that institutions join the project and pay the associated annual fee. More information on how to join TRAIL, plus the associated benefits, can be found at: <http://www.crl.edu/grn/trail/about-trail/how-join-trail>

If you have questions about TRAIL, please ask us or use the contact information at <http://www.crl.edu/grn/trail/contact-trail>

Finally, coming soon (late summer) to a browser near you, the new TRAIL project main Web page and user interface at

www.technicalreports.org

Mel DeSart, Head, Engineering Library, University of Washington desart@u.washington.edu
 Sinal Wood, Associate Professor & Documents Librarian, Baylor University Sinal_Wood@baylor.edu