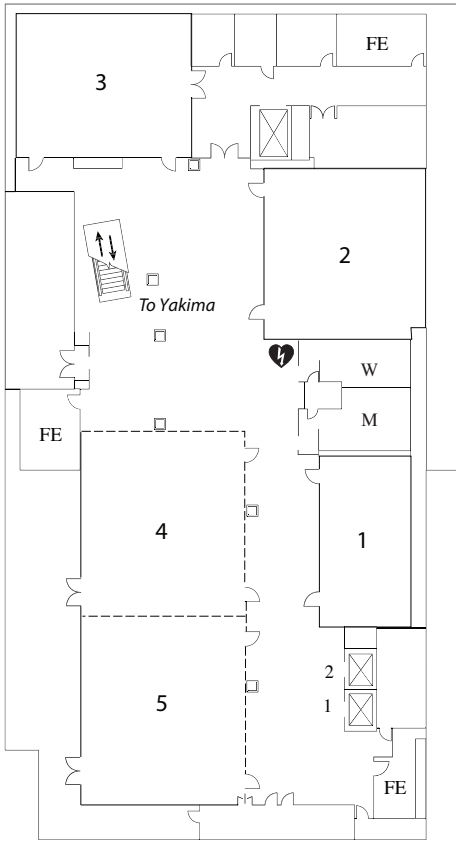
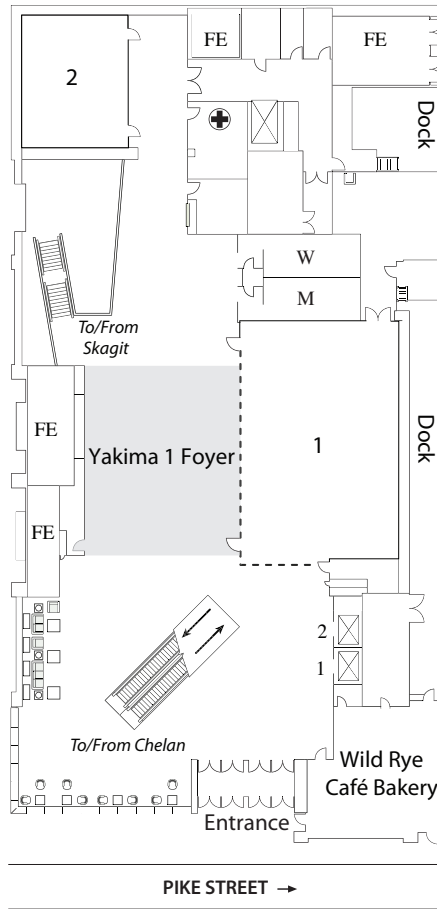


# THE CONFERENCE CENTER

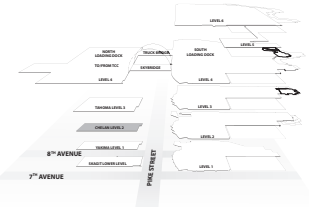
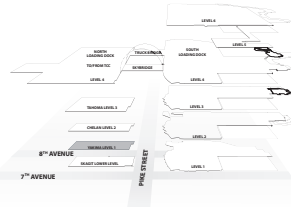
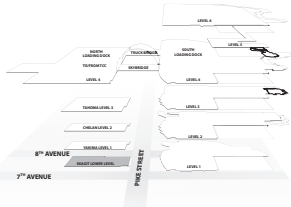
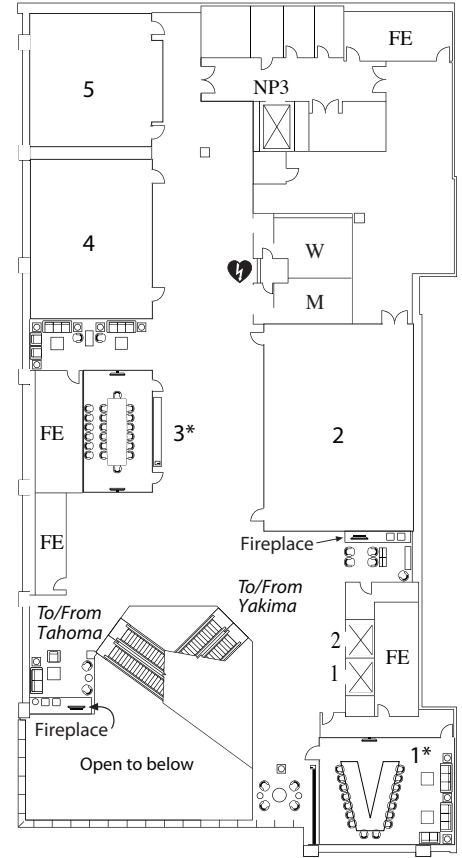
## Skagit Lower Level



## Yakima Level 1



## Chelan Level 2

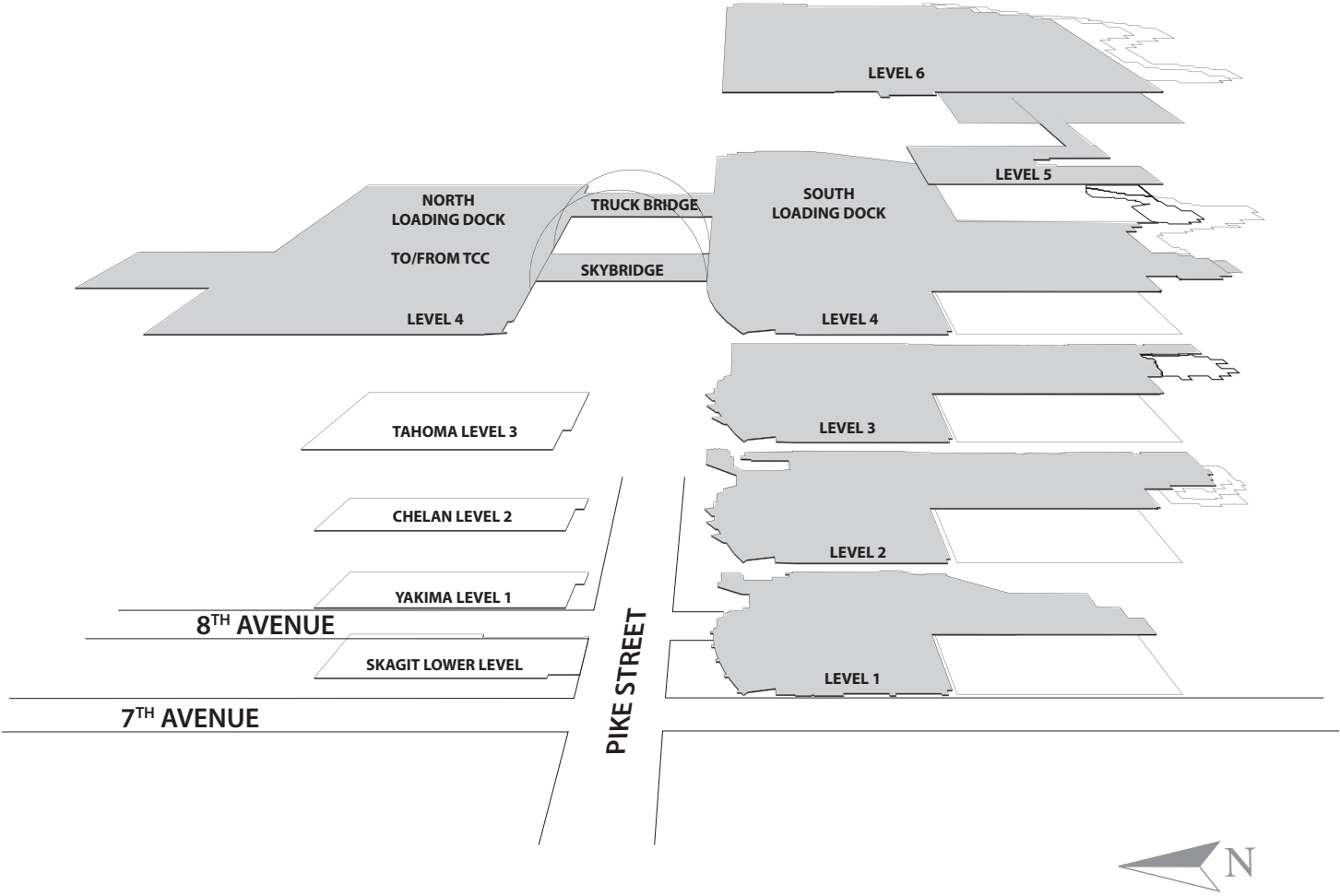


MEETING ROOMS	Square Feet	Dimensions	Height	Theater	Classroom		Banquet	Conference	Recommended Front
					3pp	4pp			
Skagit 1	966	42 x 23	12	90	36	48	60	40	South
Skagit 2	1,763	43 x 41	14	171	72	96	90	56	East
Skagit 3	1,575	45 x 35	14	133	56	84	90	52	North
Skagit 4	1,927	47 x 41	14	180	72	108	120	64	West
Skagit 5	1,968	48 x 41	14	180	72	108	120	64	South
Skagit 4-5	3,936	96 x 41	14	391	160	224	240	-	South

Yakima 1	2,838	66 x 43	10' 4"	281	129	173	150	78	North
Yakima 1 + Foyer	4,875	113 x 43	10' 4"	-	-	-	-	-	
Yakima 2	1,008	36 x 28	10' 6"	84	35	50	60	38	North

Chelan 1*	1,170	39 x 30	9'6"	-	-	-	-	16	North
Chelan 2	2,090	55 x 38	9'3"	197	90	126	120	56	North
Chelan 3*	640	32 x 20	9'6"	-	-	-	-	14	North
Chelan 4	1,344	42 x 32	9'6"	114	54	72	60	46	North
Chelan 5	1,225	35 x 35	9'6"	97	45	60	60	40	North

\* Chelan 1\* and 3\* each feature an executive conference table and are a permanent set.



**NOTES**

---



---



---



---



---



---



---



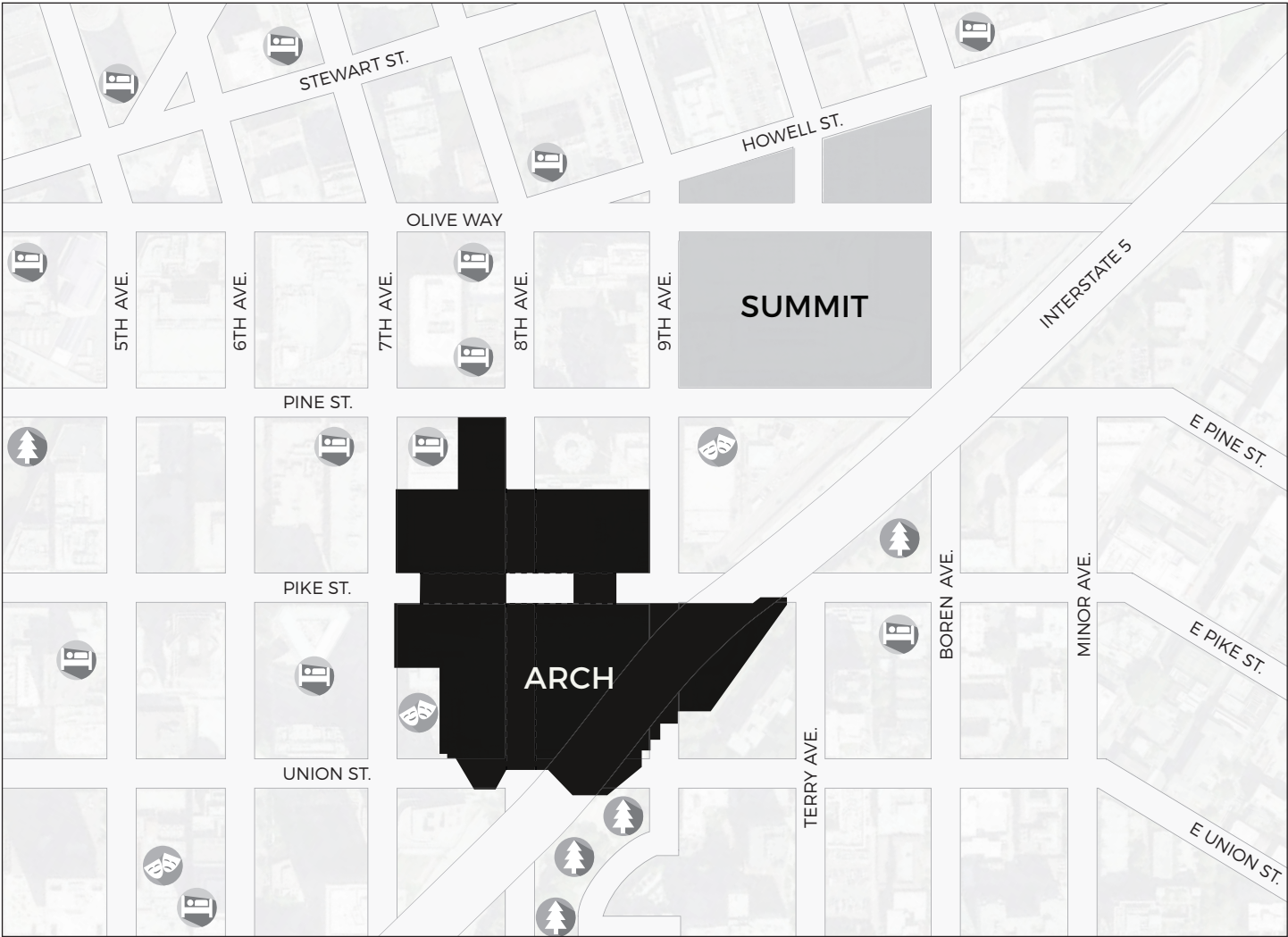
---



---



---



**NOTES**

---

---

---

---

---

---

---

---

---

---