



The Center for
Research
Libraries

GLOBAL
RESOURCES
NETWORK

Annual Report
Fiscal Year 2013:
ACCESS

(July 1, 2012–June 30, 2013)





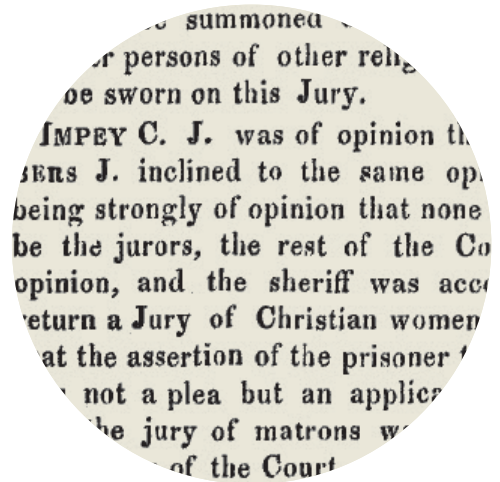
The Center for Research Libraries (CRL) is a consortium of universities, colleges, and independent research libraries. The consortium acquires and preserves newspapers, journals, documents, archives, and other traditional and digital resources for research and teaching and makes them available to member institutions through interlibrary loan and electronic delivery.

MISSION

The Center for Research Libraries' mission is to support advanced research and teaching in the humanities, sciences, and social sciences by ensuring the survival and availability of the knowledge resources vital to those activities. CRL accomplishes this mission through cooperative action with its member libraries and partners.

CONTENTS

MISSION STATEMENT	2
MESSAGE FROM THE CHAIR	4
MESSAGE FROM THE PRESIDENT	5
FY13 ANNUAL REPORT NARRATIVE	6
I. IDENTIFYING AND PRESERVING CRITICAL SOURCE MATERIALS	6
<i>The Impact of CRL: Primary Sources.</i>	8
II. ENHANCING ACCESS TO COLLECTIONS	9
<i>The Impact of CRL: Preservation</i>	10
III. INFORMING AND SUPPORTING LIBRARY INVESTMENT IN PRINT AND ELECTRONIC RESOURCES	11
<i>The Impact of CRL: Access</i>	13
BOARD OF DIRECTORS, OFFICERS, COMMITTEES, AND STAFF.	14
MEMBER INSTITUTIONS FOR FY13	16
CRL BY THE NUMBERS	21
INDEPENDENT AUDITOR’S REPORT	F1



All images from CRL collections unless otherwise indicated.
Cover: *Old Court House and Writers Buildings in Calcutta* by Thomas Daniell, 1786. © British Library Board; global map courtesy of Yale University Library; **3**, Cuba, 1895: *Plantation alley view with volanta carriage and passengers in a Royal Palm avenue*, location and photographer unknown. LLMC collections; global map courtesy of Yale University Library; from “*Decisions of the Supreme Court of Judicature at Fort William in Bengal*” by T. C. Morton. (Calcutta: S. Smith and Co., 1841.) Courtesy of LLMC-Digital; **6**, Feb 7, 1839 issue of *Diario de Pernambuco*; **9**, July 12, 2010 issue of *Radar Bogor*; **11**, May 31, 1893 front page of African newspaper *Imvo Zabantsundu*; **14**, *Map from The Indian Empire* by J.G. Bartholomew (Oxford: Clarendon Press, 1907–09). From the *Digital South Asia Library*; **15**, July 2, 1936 front page of *Ilustrowany Kuryer Codzienny*; **17**, Detail from “*The Squash Bug and its Story: A Repulsive Pest*,” *American Gardening* (July 30, 1904). From *American Periodicals* from the Center for Research Libraries; **19**, Front page of 2008 edition of *Rafu Shimpo*; **20**, Stevens, F. W. *The gaseous explosive reaction at constant pressure : further data on the effect of inert gases*. Page 7. TRAIL Collections. Accessed May 16, 2013.

MESSAGE FROM THE CHAIR



Since its founding in 1949 by ten Midwest universities, the Center for Research Libraries has seen dramatic growth in the number and type of its members. This year CRL welcomed nine new members, including liberal arts colleges, comprehensive state universities, research universities, and special libraries, for a total of 270 members as of July 1.

On behalf of the CRL Board of Directors, I want to welcome the new members and encourage their involvement in CRL governance and projects.

This change in membership reflects both the intensification of primary source research at all levels of the higher education curriculum and CRL's increasing success in delivering its collections to its members' faculty and students on terms that meet their needs. During this time, CRL's core mission has not changed: It is still charged with providing its members with preservation of and access to primary source materials in the humanities and social sciences. But globalization, pervasive digital communication, and structural reductions in the financial resources available to higher education, scholarly associations, and cultural memory organizations now demand new strategies for fulfilling that mission. This 2012–13 annual report is eloquent testimony to CRL's creativity and resourcefulness in meeting that demand.

Partnerships with organizations whose work complements CRL's mission have long been a key strategy for meeting member needs. None of our organizations can work in isolation, and our community as a whole cannot afford significant duplication of effort. This year, CRL and the Linda Hall Library of Science, Engineering, and Technology entered into a historic partnership to reduce overlap in their collections and provide CRL members with interlibrary access to Linda Hall's unequalled collection of print serials. CRL also established new agreements with the United States Agricultural Information Network and the Agriculture Network Information Center to support ongoing preservation and digitization of historical collections in agriculture. And it formed a new partnership with the British Library to digitize and make accessible online historical newspapers from Africa, South

Asia, and Latin America, which will be available to CRL members at highly favorable subscription rates.

CRL also continued to support members in their work on their own campuses. In addition to offering a growing series of educational webinars, CRL expanded its evaluation of major databases and intensified negotiation with publishers for more favorable pricing and licensing terms for members. A key component of this strategy was this year's agreement between CRL and the Northeast Research Libraries Consortium (NERL), to relocate NERL as a cooperative program under the CRL organizational umbrella, increasing knowledge and capacity for both organizations.

Finally, it is important to note CRL's role in helping consortia across the country responsibly and rationally reduce their print holdings in favor of electronic access. It's no longer necessary for all or even many libraries to hold print copies of the same journal runs, but it's not prudent for us to abandon all print copies. Through the Print Archiving Network and the PAPR registry of holdings, CRL is coordinating standardization and mutual exchange of good practice, to help us all do the most possible with local resources while keeping the long-term common good in clear view.

CRL's Board of Directors plays an essential role supporting Bernie Reilly, a brilliant strategist leading us across an ever-changing information landscape, and his energetic and dedicated staff. I want to thank the Board members who ended their terms this year: Deborah Carver, Dean of Libraries, University of Oregon, our highly capable treasurer; Edward Macias, Provost and Executive Vice Chancellor for Academic Affairs, Washington University in St. Louis; and Joyce L. Ogburn, Dean of Marriott Library and University Librarian, University of Utah. Their commitment of time, energy, and wisdom as representatives of the membership has been invaluable. And I want to welcome three new members of the Board: Lars Schoultz, the William Rand Kenan, Jr., Professor of Political Science at the University of North Carolina at Chapel Hill; Virginia Steel, University Librarian, University of California, Los Angeles; and Xuemao Wang, Dean and University Librarian, University of Cincinnati. I look forward to their contributions.

A handwritten signature in blue ink that reads "Richard Fyffe". The signature is stylized and fluid.

Richard Fyffe
*Samuel R. and Marie-Louise Rosenthal Librarian of the College,
Grinnell College*

MESSAGE FROM THE PRESIDENT



This year CRL continued to grow its shared collections and found new ways to improve and accelerate scholars' access to them. Important materials from the US, Canada, the UK, Egypt, Iraq, Indonesia, Poland, Brazil, and Tibet were added to the global resources available to member libraries. And millions of pages of newspapers, legal publications,

historical books and journals, and other primary source materials were digitized and made newly available online by CRL and its partner organizations.

The new CRL partnership with the Linda Hall Library of Science, Engineering, and Technology builds upon CRL working relationships with other major organizations, including the Law Library Microform Consortium and the United States Agricultural Information Network, to open rich new collections to researchers at CRL libraries.

This year CRL also did more to support member library investment in preservation and electronic resources. Bringing the Print Archives Preservation Registry (PAPR) online was a major step toward enabling member libraries, and the consortia in which they participate, to make fully informed decisions on managing their large print serial collections. The most comprehensive existing source of information on the holdings of shared and archived print serials, the PAPR database held records for over 34,000 titles archived from 44 different libraries by year's end.

As the costs of commercial databases continued to rise, CRL negotiated for its member libraries favorable terms for the purchase of major news databases and the newly released archives of two giants of the twentieth century: Winston Churchill and Josef Stalin.

This year's Global Resources Forum webinars familiarized hundreds of collection, acquisition, and reference specialists at member libraries with primary source collections in the fields of agriculture, modern legal and political history, and the history of science, technology, and engineering, and with the complex new issues and practices of text and data mining electronic resources.

At a June 2013 CRL roundtable, specialists from UCLA, Vanderbilt, Penn State, the University of Illinois, and the University of North Texas spoke about the challenges of long-term access to electronic and broadcast news, and helped shape CRL's agenda for preserving news in the post-microform era. These activities are designed to enrich the knowledge and understanding CRL libraries bring to decisions on their investments in e-resources.

The inventory provided in this report of the year's accomplishments is intended to convey a sense of CRL's impact: the savings on the cost of commercial databases negotiated; the number of journal titles now accessible from the Linda Hall Library; the number of items newly digitized, and so forth. But those metrics reveal only a part of the picture. Therefore we include in this year's report three "stories," intended to show the impact of CRL activities and collections in a different, but no less compelling, way. They illustrate impact in terms of the relevance of historical evidence preserved, and in terms of the uses of that kind of evidence in research and teaching.

There are many to thank for making possible the ongoing work of CRL and the legacy of historical and scientific evidence that it has built. This year CRL received substantial support from the Andrew W. Mellon Foundation and the Institute of Museum and Library Services. The services and the shared collections of CRL are a tribute primarily to the libraries in the U.S., Canada, and Hong Kong that supported this work in FY2013. Those institutions are listed on page 14 of this report. Their commitment to this important collective action represents the best of what research libraries do, and will benefit scholars for decades to come.

A handwritten signature in blue ink that reads "Bernard F. Reilly". The signature is fluid and cursive, with the first name being the most prominent.

Bernard F. Reilly
President

DIARIO DE PERNAMBUCO

PARTE OFFICIAL.

PERNAMBUCO.

COMMANDO DAS ARMAS.

Ordem do dia 1.º de Fevereiro de 1839.

Officio — Ao Exm. Presidente, remetto-lhe para que enderessasse a Secretaria do Estado dos Negocios da Guerra os papéis de num. 1 a 3, e de 5 a 8, e os Officiaes que foram Reformados, e acidos na forma da Lei, e que falei durante o anno p. p. assim como as informações de conducta dos Officiaes, e os adetes da Guarnição, pertencentes ao segundo semestre do referido anno, e dizendo-lhe que não acompanhava todos estes papéis o mappa num. 4. Movimentos Literarios d'Academia,

Nome do Imperador houve por bem conceder que fosse conservado em uma das Fortalezas desta Provincia o preso Manoel Boa-ventura Ferraz, e que o Exm. Sr. Presidente destinou para esse fim a Fortaleza do Brum, onde ja se acha.

Portaria — Ao Capitão Commandante interino do 4.º Corpo de Artilheria, mandando dar demissão ao 2.º Cadete Urbano da Silva Pereira, e soldado Antonio Joze Rodrigues, que foram julgados incapazes pela Junta de Saude, e por assim o determinar o Exm. Sr. Presidente em officio do 1.º deste mez.

Dita — Ao Commandante interino da 4.ª Companhia do 1.º Batalhão Expeditionario ao Sã, ordenando-lhe, que consentisse vir a terra o Alferes Antonio Faustino de Miranda, que se devia recolher a bordo hoje mesmo as 6 horas da tarde.

THEZOURARIA DA PROVINCIA.

Ordem do dia 5 de Fevereiro de 1839.

Publico a favor dos ditos Mc. Calmont & Comp.

Diversas * Repartiçoens.

MEZA DO CONSULADO.

— A Pauta he a mesma do num. 27.

CORREIO.

Oj Pataxo Nacional Columbia de que he Capitão Idelfonso Ignacio de Menezes sae para Lisboa no dia 9 do corrente.

A Barca Santa Irita, Capitão Feliciano Jose Gomes, sae para Lisboa no dia 13 do corrente.

O Brigue Urbano do qual he Capitão, Manoel Joaquim Santos sae para o Maranhão no dia 16 do corrente.

O Hiato Portuguez S. Jose do qual he Mestre Joaquim Jose de Sousa sae para

trilha do districto do Carimoy por esta ebrias, e insultarem a mesma patrul Manoel Vital, e Martinho das Virges pardos, e um Americano Inglez, tamt pardo, pelo Sub-Prefeito da Freguezia Santo Antonio, este por se ter lançado mar logo que avistou o dito Sub-Prefeito fazendo-se assim suspeito, o segundo se ter querido enforcar, e o primo por estar com alaridos tarde da noite; Manoel da Ora, e Antonio, pretos, este cravo de Joze Maria, pelo Sub-Prefeito da Freguezia da Boa-vista, o 1.º para averiguacão, e o 2.º por se encontrar as 11 horas da noite, e suppol-o fugi. E' o que consta das partes hoje recdas nesta Secretaria.

Deos Guarde a V. Exc. Prefeitura Comarca do Recife 5. de Fevereiro 1839. Illm. e Km. Sr. Francisco do 1.º go Barros, Presidente da Provincia Francisco Antonio de Sá Barreto, Pfeito da Comarca.

Parte do dia 6.

I. IDENTIFYING AND PRESERVING CRITICAL SOURCE MATERIALS

Since CRL's founding in 1949, groups of librarians, archivists, and other scholars interested in the study of particular world regions, have worked under the CRL umbrella to identify significant archival materials and documentation and to arrange for their safekeeping. Numerous collections of unique materials documenting the cultures, economies, development, politics, and history of nations in the developing world owe their survival to the expertise, time, and resources invested by these groups.

CRL provides administrative and organizational support to a growing number of these groups today. Their activities have evolved over time to keep pace with publishing and scholarly practice. They now collect, microfilm, and digitize materials; mount collections on the open web; coordinate the strategic development of member collections; and negotiate terms for purchase and subscription access to specialized research databases.

CRL also collaborates with partner organizations to expand the impact of its preservation efforts, including the Law Library Microform Consortium and the United States Agriculture Information Network.

GLOBAL RESOURCES AND AREA STUDIES PROGRAMS

This year saw a range of activities by community-led programs supported by CRL that identify and preserve critical and often at-risk archives and primary source materials from the major world regions. Some illustrations of their success include:

- **Sub-Saharan Africa: CAMP** completed digitization of a set of broadcast transcripts from The Transcription Center (London) held in the Dennis Duerden Collection of Sound Recordings Relating to African Novelists, Poets, Playwrights, Artists and Musicians. The transcripts originally accompanied the collection of sound recordings of these interviews, now held at the Archives of Traditional Music at Indiana University. CAMP also

welcomed the first two African institutions to its membership. The Mountains of the Moon University (Uganda) and the University of Cape Town (South Africa) became Affiliate Members of this cooperative African studies preservation effort.

- **Latin America: LAMP** funded the digitization of the Brazilian newspaper *Diario de Pernambuco* (above), one of the oldest newspapers in circulation in Latin America, for 1825–63. These issues offer insight into early Brazilian commerce, social affairs, politics, family life, and slavery, and are now available online through the University of Florida's [South American Digital Collections](#).
- **Middle East and the Arab World: MEMP** preserved issues of the Baghdad newspaper *Iraq Times*, a key English-language resource for research on this volatile era in Iraq's history, filling a gap in CRL's collections. CRL now holds the *Iraq Times* from January 1948 through May 1964 (see page 10 for more information).
- **South Asia: SAMP** preserved a run of issues from the 1960s of the rare Indian title *Bihar Ki Khabren*, an Urdu publication promoting the cultural and economic development of the Indian state of Bihar. The issues are available both on microfilm and [electronically](#), with the decorative covers scanned in color to preserve their imagery.
- **Southeast Asia: SEAM** preserved the Indonesian regional daily newspaper *Radar Bogor* from 1999 to 2011. SEAM selected *Radar Bogor* for preservation for its extensive coverage of local events in west Java during the turbulent years after the resignation of President Suharto.
- **Slavic and Eastern Europe: SEEMP** acquired the entire run (1910–39) of *Ilustrowany kuryer codzienny* on microfilm, an important source for researching inter-war Poland. Distributed throughout Europe during its time, it includes news on politics, international events, daily life, fashion, sport, and culture.
- **French-Language Collections: CINFAL** was awarded a one-year planning grant from the National Endowment for the Humanities to identify, describe, and improve both conventional and online access to French revolutionary pamphlet collections. The grant will help CINFAL members and partners work

toward collaborative data collection, analysis, and the establishment of standards and workflows related to cataloging existing pamphlet collections.

- **German-Language Collections: GNARP** continued to extend access for its members to select German-language electronic resources via licensing and electronic subscription. GNARP works with publishers such as DigiZeitschriften to expand access to a spectrum of German-language scientific and scholarly literature. GNARP's membership continues to grow, with 53 institutional members participating.
- **Latin Americanist Resources:** Expanding its mission to pursue digitization projects, **LARRP** funded the digitization of issues of *El Mundo*, a Puerto Rican newspaper which will be hosted on the Digital Library of Caribbean (DLOC).
- **U.S. Government Technical Literature:** The University of North Texas Digital Library, which serves as one of the repositories of the materials digitized by **TRAIL**, now holds more than 15,000 items (700,000 pages). **TRAIL** uploaded nearly 600 new U.S. government technical reports this year, including reports from the United States Bureau of Mines, and the National Advisory Committee for Aeronautics. Typical usage for **TRAIL**'s collections at UNT is about 25,000 uses per month.

GLOBAL RESOURCES PARTNERSHIPS

Legal and Government Information

CRL's partnership with the Law Library Microform Consortium (LLMC) continued in FY13 to advance the two organizations' common mission of preserving and providing digital access to important and often at-risk documents in law and government from the U.S., Canada, and other national jurisdictions. In line with a content plan formalized in September 2012, LLMC digitized 3,000 volumes of historical legal materials prioritized by CRL libraries. These included 1,700 volumes of state legislative journals, legal materials from British Commonwealth nations in Africa, and Latin American legal codes. By the end of FY13, more than 6,000 volumes have been added to the LLMC-Digital database under CRL sponsorship, including U.S. and Canadian legislative journals, Haitian government documents, and African colonial-era law reports.

Project Ceres: the History and Economics of Agriculture

This year CRL formed a partnership with the **United States Agricultural Information Network (USAIN)** and the **Agriculture Network Information Center (AgNIC)** to support the ongoing preservation and digitization of historical collections in the field of agriculture. In May 2013, CRL and the project sponsors committed funding to 16 libraries that will digitize and commit to preserving print materials essential to the study of the history and economics of agriculture. Materials selected included commercial agricultural serials, and publications of agricultural extension programs and experiment stations.

News

CRL formalized an ambitious new partnership with the **British Library** to digitize and make accessible online historical news-

papers from Africa, South Asia, and Latin America of interest to scholars at UK and North American universities. The partnership will dramatically expand and enrich the digital content in the **World Newspaper Archive (WNA)**, with materials sourced extensively from the British Library's unparalleled archive of British and overseas newspapers. Digitization and hosting will be undertaken by the BL's digital newspaper archive partner brightsolid, and CRL's own digital partner Readex (a division of NewsBank). In its initial phase, the partnership will focus on newspapers published throughout Africa during the period 1798–1900. CRL also continued initial work begun on Latin American Newspapers, Series 2 (1822–1922) of the WNA, producing more than 488,000 pages of content from sources such as Harvard University, the University of Connecticut, University of Florida, University of Georgia, University of Texas, and others.

CRL continued work on the **ICON Global Newspaper Directory**, harvesting or receiving title-level and granular issue-level metadata on newspapers from a variety of sources, including the Library of Congress, Chronicling America, the American Antiquarian Society, Readex, and others. The objective of the IMLS-funded effort is to create an authoritative databank of titles and holdings of newspapers from around the globe as a collection management tool for libraries.

In June 2013, CRL hosted a Global Resources Roundtable "*Beyond the Fold: Access to News in the Digital Era*," at which participants explored new scholarly uses of news content and considered cooperative library strategies to support access to and preservation of news in print, broadcast and Web-based formats. See the [summer 2013 issue](#) of *FOCUS on Global Resources* for more details.

Science, Technology, and Engineering

CRL's partnership with the **Linda Hall Library of Science, Engineering, and Technology** was the focus of CRL's Collections Forum in April. Stephen Bosch, CRL's Senior Collections Advisor for STE, reported the results of his detailed analysis of the combined holdings of CRL and LHL, providing data on the strengths of the holdings, especially compared to other significant STE collections. Bosch's analysis revealed that the CRL and Linda Hall serial collections combined surpass the STE holdings of any other major research library. The forum helped CRL identify priorities and directions for its future work with Linda Hall on preserving and developing print research collections. (See more information on this partnership in Section II, below).

PURCHASE PROPOSAL PROGRAM

CRL purchased twelve valuable microform and reprint collections identified and prioritized by representatives of CRL libraries through this year's Purchase Proposal Program. Acquisitions included a microform copy of the main Tibetan language newspaper published by the Chinese Communist Party in Tibet between 1961 and 2006; *British India Office Files on Tribes and Terrorism, 1909–1949*; and Nazi-era German newspapers.

STATES-MARINE LINES
Frequent Sailings with
Fast Vessels from U.S.A.
and Japan to Korea.
Room 325, Bando Bldg.
Tel. 2-4643, 3-4784

THE KOREA TIMES

The Weather
Seoul and its vicinity.
Oct. 19—Clear with
northwesterly and
northeasterly winds.

No. 1889

Seoul, Saturday October 20, 1956

Price 20 Hwan

Rhee Calls for Green Hills, Clean Life

President Syngman Rhee instructed Government Ministers yesterday at a regular State Council session in Kyungso Dae to inspire nation's interest in forest conservation in a measure to cover mountains and forests with green and called for the nation's active cooperation in new life movement by trying to keep their surroundings clean.

Pointing out the fact that there is a traditional

Warm Gifts



Japan and Soviet End State of War

MOSCOW, Oct. 18—(AP)—A declaration ending the 11-year technical state of war between the Soviet Union and Japan will be signed in the Kremlin Friday evening.

The Soviet Foreign Ministry announced that a banquet in honor of Japanese Premier Ichiro Hatoyama would be held in the Kremlin at 18:00 Friday.

Foreign Ministry sources said the ceremony at which the declaration would be signed probably would follow the banquet.

Reliable Japanese sources said the only remaining point at issue is a paragraph detailing disposition of the Soviet-occupied Habomai and Shikotan, islands off northern Japan.

A final solution, according to these sources, could take one of three forms:

1. The Russians could agree to return the two territories outright.

THE IMPACT OF CRL: PRIMARY SOURCES | Carthage College

Undergraduate Carthage College students in Professor Eric Pullin's historical methods course used CRL primary source materials for their research papers, focusing on the history of the Cold War.

Pullin observed that "All of these papers were quite good, but three, which relied most heavily upon materials from CRL stood out as exemplary: one written about the Cuban Missile Crisis, another about political decision making during the Vietnamese war, and a third about American anti-Communism." Students were able to use essential primary sources including U.S. Foreign Office Files on Vietnam and Cuba, Soviet Communist Party Plenum documents, and The Korea Times from 1956 to 1960. The instructor reports that "In course evaluations,

[students] noted that access to CRL materials was the highlight of the course. By working with materials that are not commonly used by other undergraduates, the Carthage students felt that they were making unique contributions to scholarship."

Pullin first encountered CRL's depth of mid-20th century primary resource materials when researching for his book on relations between the United States, India, and the Soviet Union during the Cold War. He notes, "As I looked more into CRL's collections, I discovered [a particular concentration of] materials relevant to researching the Cold War."

Pullin plans to assign use of CRL materials to upcoming courses. He notes the impact of using primary documents: "Students certainly like the convenience

October 20, 1956 front page of The Korea Times.

of digital sources, but they also genuinely appreciated the 'hands-on' ability to work with dusty documents. One commented that it made her feel like she was actually touching history." ❖

USAHA TERBAIK

JAGOAN DUO TELKOMSEL, SEMARAKKAN PESTA BOLA.

Kartu As Jagoan Serbuuu...!
 BAYAR CUMA SERBU...!

1000 SMS
 1000 MENIT
 *1000

simPATI
 Jagoan Halpon GRATIS SETIAP HARI

300 MENIT
 + 300 SMS
 *3000

TELKOMSEL

4650

foto di wilayah JABODETABEK

Subanglarang
 bayar 3 juta
 bayar 300 jutaan

45%

Pembacok Tama Terorganisir

JAKARTA-RADAR BOGOR

SEHARI setelah Presiden SHY meresmikan Jama Negeri Langkat, terorganisir pada malam minggu

Teror pada

23 Januari 2008

Pengacara Ego Sadaria meniadakan pemukiman baru bagi karena negeri s' d'organisir yang dilakukan dengan pengacuan pada malam minggu Subi Sialah

dan 318 KUPP secara mendata pengorganisasian yang pengorganisasian kelas rendah yang dibagikan Kujatras Agung, KUPP mengorganisir data resin, hasil audit BPK

6 Juli 2010

Dua orang tak d'kenal me'nyapu Nor hom meresmikan Jama Negeri Langkat. M'galkan d' sabutannya menurut: benda terbang, listrik, g'd'ndai pendiri-pendiri Pak

II. EXPANDING ACCESS TO RESEARCH MATERIALS

CRL's work with partner organizations to digitize primary source collections on a strategic, systematic basis was augmented by the ongoing digitization of materials from the CRL shared collection to fulfill specific researcher requests. Providing electronic access to materials on a "just-in-time" basis has the dual benefit of supporting current faculty and student research projects, and fueling future research by building a constantly growing, online collection. Over time this activity has generated a sizable body of research materials not duplicated elsewhere.

DIGITIZATION ACTIVITIES

CRL continues to digitize its shared collection. Between July 1, 2012, and June 15, 2013, CRL digitized 831,094 pages from 2,045 titles. Almost 90 percent of these materials were scanned in response to loan requests. Digitized content is hosted on CRL web servers and linked from CRL's catalog, as well as being listed in WorldCat. Researchers continue to favor electronic access to materials over use of microform and paper. While total ILL requests filled by CRL were down approximately 13 percent from 2012, digital downloads from materials

scanned by CRL increased more than 120 percent over the same period.

In addition, CRL Technical Services worked to increase visibility of CRL collections through major web-scale discovery services, including Summon, Primo, and EBSCO, and provided record sets for inclusion on the online catalogs of 38 member libraries.

LINDA HALL LIBRARY

CRL's new partnership with the Linda Hall Library of Science, Engineering, and Technology had an immediate and positive impact, vastly increasing the scope of materials accessible to researchers in the CRL community.

Initiated in July 2012, the partnership provides ILL access to the combined collection of print serials from CRL and LHL. The history of science, technology, and engineering has long been a strength of CRL collections. The proceedings of U.S. and foreign scientific academies, long runs of trade and industrial journals, and dissertations in chemistry and physics from major European universities form the core of these holdings. In FY13, the Linda Hall Library filled more than 11,000 requests for articles for researchers at CRL libraries.



No. 41880 FRIDAY JANUARY 4 1952 13 Fils

Printed and Published by The Times Printing and Publishing Co. Ltd.,
Responsible Mudir—Badri Al Suwaidi, Advocate.

Unity
U.S.
PC
THE U.S. S
ISSUED A ST
AMERICAN UNI
OVER POLICY
STATEMENT W
PUBLICATION

THE IMPACT OF CRL: PRESERVATION | MEMP

The Middle East Microform Project (MEMP), a program operating under the CRL umbrella since 1987, preserves important and endangered documentation of two volatile periods in modern Middle East history.

This year MEMP completed its preservation on microfilm of a run of the Baghdad newspaper Iraq Times, a vital English-language source for research on a particularly turbulent era in Iraq. CRL now holds the Iraq Times from January 1948 through May 1964, which documents the transition from British influence in Iraq to the overthrow of the monarchy and the rule of General Abd al-Karim Qasim. Qasim was the nationalist Iraqi Army general who seized power in a 1958 coup d'état.

MEMP also microfilmed the initial issues of the Cairo-based newspaper al-Tahrir. Launched in July 2011, the daily newspaper takes its name from Tahrir Square, the epicenter of the revolution that culminated in Egyptian president Hosni Mubarak's downfall. The paper's co-founder and editor-in-chief, Ibrahim Eissa, was a vocal critic of the Mubarak regime, and had been forced out of his position at the independent publication al-Dostour in 2010. This year MEMP preserved on microfilm issues from July through December 2011, and will preserve the paper's 2012 issues as well.

MEMP was established by the [Middle East Librarians Association](#) in 1987, and preserves on microform unique, rare, and often deteriorating

One of MEMP's major projects this year involved preserving issues from 1951 and 1952 of the Baghdad newspaper Iraq Times.

original materials such as newspapers, pamphlets, books, and manuscript materials for Middle East studies. Its geographic scope of coverage includes Arab countries, Israel, Turkey, Iran, Afghanistan, and Central Asia. ❖

Imvo Zabantsundu.
(NATIVE OPINION.)
Authorized Medium for the Publication of Government Notices addressed to Natives throughout the Colony and the Territories.

IXABISO 3d.] KING WILLIAMS TOWN, CAPE COLONY, NGOLWESI-TATU, MAY 31, 1893. [Vol. IX, No. 447

<p>IXABISO EASE KINGWILLIAMSTOWN.</p> <p>DYER AND DYER KING WILLIAMSTOWN.</p> <p>Kungena into emenzi ye Mphahle Entshe...</p> <p>Eena Fashini Zizezintsha, Nangubo Zifesekileyo ngamazabisa epantsi anokufumaneka.</p> <p>Ihempe, Amaqhina, Izitadi, Izihlangu, ne Shuzi; Ingcawa, Amafelane, Ityai Pili, Ikoelokroi, nti, njalo-njalo.</p> <p>ITYALI EVATWA OMASHINI AMABALA-ITYASOSA. Intlobo zonke zazo, ngamazabisa onke.</p>	<p>IXABISO EASE QUEENSTOWN.</p> <p>KANGEL'APA. KANGEL'APA.</p> <p>A PO Inqubo ngamazabisa ezifaneleyo ezintsha zi koon e Queens- town ezifaneleyo iQueens town ezintsha.</p> <p>Sowden, Mitchell and Stoddart CATHCART ROAD, *QUEENS TOWN.*</p> <p>— BATHURST —</p> <p>NGENGUBO ZAMADODA</p>	<p>IXABISO YASE KINGWILLIAMSTOWN.</p> <p>LEMINYAKA I 18 IQQITILEYO.</p> <p>SINGENISE KWELI LIZWE IBLANKETE ZOBOYA</p> <p>EZILUKWE NGOBUGCISA OBU BODWA, Igama lazo yi "EXTRA NAVY or MATTROSS."</p> <p>Kungeniswe ngabanye intlobontlobo ezifana noluhlobo; esigqibe ke kwelokuba SIZIPA- ULE i BLANKETE ZONKE ngopawu esi- luqinisele na Komkulu ngohlobo lwemifa.</p>
---	---	--

III. INFORMING AND SUPPORTING LIBRARY INVESTMENT IN PRINT AND ELECTRONIC RESOURCES

Aside from building and providing access to shared collections, CRL now devotes a growing portion of its resources to supporting informed and strategic investment in print and digital resources by its member libraries. This year CRL negotiated favorable terms for the purchase of and subscription to major databases by CRL libraries, and undertook independent, critical assessments of several databases and providers.

CRL also developed programming and resources to support reference, collection, and e-resources staff as they face the challenges of managing their libraries' transition from print to digital collections. CRL support ranged from forums on shared print archiving and text-mining, to registries of archived newspaper and serial holdings, to online venues for sharing intelligence and expertise on digital publishers and their products.

These efforts broaden the foundation of information and knowledge upon which libraries can base their key decisions on maintaining and investing in electronic and print resources. A strong base of information and expertise will enable libraries to deal collectively and from a position of strength with publishers and other providers of services.

MAJOR HUMANITIES AND SOCIAL SCIENCE DATABASE NEGOTIATIONS

CRL continued to expand its evaluation of major databases and its negotiations with publishers for the purchase and licensing of same on behalf of CRL libraries. CRL efforts again concentrated this year on databases in areas of historic CRL strength: news, government archives, and other primary source and foreign language materials. CRL extended 28 offers from publishers including Adam Matthew Digital, Brill, Gale Cengage, East View

Information Services, ProQuest, and Readex. A total of 112 CRL libraries participated in the licensing program, purchasing one or more of the following databases at a significant savings:

- CRL FY13 Electronic Resource Offers**
- African American Newspapers, 1827–1998
 - American Indian Histories and Cultures
 - American Periodicals from the Center for Research Libraries
 - Chatham House Online I
 - The Christian Science Monitor
 - Churchill Archives
 - Confidential Print Series
 - Current Digest of the Chinese Press
 - Electronic Enlightenment
 - Foreign Broadcast Information Service (FBIS) Daily Reports
 - Hispanic American Newspapers, 1808–1980
 - Joint Publication Research Service (JPRS), 1957–1994
 - Landscan Global Archive
 - Landscan2011
 - Latin American Anarchist and Labour Periodicals Online
 - Middle East Newsstand
 - Nineteenth Century Collections Online, Parts 1–4
 - Nineteenth Century Collections Online, Parts 5–8
 - ProQuest International Newsstand
 - ProQuest Latin American Newsstand
 - ProQuest U.S. Hispanic Newspapers
 - Shen Bao
 - Social Explorer
 - Stalin Digital
 - State Papers Online, 1714–1782
 - Statista
 - Twentieth Century American Newspapers, Series 1–3
 - World Biographical Information System (WBIS) Online

The Global Resources Forum

In support of informed, strategic library investment in digital collections and services, CRL's [Global Resources Forum](#) features [reviews](#) of research databases under consideration by

CRL libraries, as well as independent analyses of vendors and publishers. The Forum also hosted teleconferences, webinars, and other activities for a growing number of collections and reference staff at CRL libraries. These events were venues for learning about the needs and interests of reference, collection development, and collection management specialists at member libraries and for exploring the new challenges facing libraries in ensuring the long-term accessibility and integrity of primary evidence.

CRL webinars in FY2013 included:

- [Agricultural Collections](#) (July 2012)
- [CRL Purchasing and Licensing Programs](#) (August 2012)
- [CRL Collections and Services](#) (October 2012, June 2013)
- [Research Access to Sources on Law and Government](#) (October 2012)
- [Text Mining Opportunities and Challenges](#) (November 2012)
- [Access to News in a Digital Age](#) (January 2013)
- [Access to Science and Technology Collections from Linda Hall Library](#) (March 2013)

Two GRF conference calls featured Frank Menchaca, Senior Vice President at Cengage Learning, discussing prospects for Gale publishing plans in the light of Cengage Learning's anticipated financial restructuring (June).

A Global Resources roundtable: *Beyond the Fold: Access to News in the Digital Era*, explored cooperative strategies to support emerging scholarly uses of news content (June).

The North East Research Libraries Consortium (NERL)

In April 2013, CRL and the North East Research Libraries Consortium (NERL) concluded an agreement under which NERL operations will relocate to CRL. Under the agreement, NERL, which licenses major online products on behalf of 28 member academic research libraries and approximately 80 affiliates, will operate as a cooperative program under the CRL organizational umbrella. This partnership preserves a high degree of autonomy and self-governance for NERL, while creating synergies between NERL licensing and CRL's own Global Resources Forum activities.

Supporting Print Archives

CRL's [Print Archives Preservation Registry \(PAPR\) database](#) went live in August 2012. The Registry supports archiving and management of serial collections by providing comprehensive information about titles, holdings, and archiving terms and conditions of major print archiving programs. The database currently has approximately 25,000

records and provides information about 21 print preservation and shared print programs and 39 facilities used for archiving print resources.

Programs whose holdings are currently represented in the Registry include the [Law Library Microform Consortium \(LLMC\)](#), [CRL's JSTOR archive](#), [Portico](#), [Western Regional Storage Trust \(WEST\)](#), and [CLOCKSS](#). The database is available online at <http://papr.crl.edu/>.

CRL continued to sponsor the semi-annual **Print Archive Network (PAN)** forum, held in conjunction with ALA Mid-winter and Annual Conferences, as a venue for shared print community discussions.

PRIMARY SOURCE AWARDS

The CRL [Primary Source Awards](#) recognize faculty, librarians, students, and others in the CRL community for innovative uses of, and the promotion of access to, primary source materials. The 2013 awardees and their projects were:

2013 Award for Access

Jennifer Wolfe, Digital Scholarship Librarian, University of Iowa

Nominated by: Paul Soderdahl, University Librarian for Information Technology, University of Iowa

For her efforts in developing the University of Iowa's crowd-sourcing DIY History initiative, which features five collections, beginning with "Civil War Diaries and Letters."

2013 Award for Research

Thea Lindquist, History Librarian, University of Colorado at Boulder (CU)

Nominated by: Jennifer Knievel, Director, Arts and Humanities, University Libraries, University of Colorado at Boulder

For her WWI Linked Data project, which applies linked data methods to enhance use of CU's digitized World War I Collection (WWI) of more than 1,200 pamphlets, books, maps, and speeches spanning the years between 1914 and 1920.

2013 Award for Teaching

Edward Udovic, Vice President of Teaching & Learning and Senior Executive for University Mission, DePaul University

Nominated by: Scott Walter, University Librarian, DePaul University

For his "The Lincoln Park Neighborhood: Then and Now" course, which incorporated the discovery and use of primary source materials held at DePaul University and the Chicago History Museum into a number of course assignments, including critical, reflective learning journals.

N.º 251 Sábado 7 de Setiembre de 1844.

Sentencia pronunciada por el Consejo de guerra de la Comision Militar ejecutiva permanente en esta Ysla, por S.M. Visto el decreto del Sr. Brigadier de Infanteria D.º José Falguera presidente de la Comision Militar ejecutiva permanente de esta Ysla, su fecha catorce de Marzo ultimo, autorizando al fiscal de la misma Comandante D.º José Maria Sanchez, para proseguir la causa suinada en catorce de Febrero por el Comandante de armas de Guamacaro, en

THE IMPACT OF CRL: ACCESS | Cuban Colonial Court Documents

Reynaldo Ortiz-Minaya, doctoral candidate in the Department of Sociology at Binghamton University (The State University of New York), needed access to a rare manuscript compilation of Cuban colonial court documents for his dissertation research. One option was to travel to the repository, Harvard's Houghton Library, and laboriously transcribe pages or request facsimile copies of selected pages. Instead, Edward Shepherd, Director of Collections at Binghamton University Libraries, reached out to Mary Wilke, CRL's Membership Liaison and Outreach Services Director. CRL directly supported Harvard's digitization of the manuscript.

Ortiz-Minaya's research had led him to a volume in the J.A. Escoto collection at Harvard. Descriptions of sentences for prisoners convicted of homicide during slave resistance

movements noted their transfer to a penal colony in San Juan, Puerto Rico, which Ortiz-Minaya indicates "became a colonial showcase of punitive disciplinary regulation, modeled . . . after the slave plantation system itself." The court transcripts and newspaper clippings digitized with direct support from CRL were an essential resource for Ortiz-Minaya's dissertation: *From Plantation to Prison Cell: Visual Economies of Slave Resistance, Criminal Justice, and Penal Exile in the Spanish Caribbean, 1820–1886*.

These digitized documents are now available not only for Ortiz-Minaya, but also for other scholars who are able to access the resource on Harvard's digital collections platform. Additional colonial Caribbean materials also available online through other CRL initiatives and partnerships include: Haitian and Cuban documents

Documentos para la historia de Cuba (1844–73), José Augusto Escoto Cuban History and Literature Collection, MS Span 52 (755) <http://nrs.harvard.edu/urn-3:FHCL.HOUGH:9920131>. Houghton Library, Harvard University.

digitized with CRL support by the [Law Library Microform Consortium](#); [Puerto Rican civil court documents](#) digitized through LAMP; and a large group of heavily used [Brazilian documents](#) mounted on CRL's server in an early digitization project. ❖

BOARD OF DIRECTORS, OFFICERS, AND COMMITTEES, FY13

BOARD OF DIRECTORS

Elected April 2011

SARAH MICHALAK, CHAIR
University of North Carolina at Chapel Hill

RICHARD FYFFE, VICE CHAIR
Grinnell College

LESLIE WEIR, SECRETARY
University of Ottawa

DEBORAH CARVER, TREASURER
University of Oregon

DAN HAZEN, CHAIR COLLECTIONS AND
SERVICES POLICY COMMITTEE
Harvard University

PAUL COURANT
University of Michigan

SUSAN GIBBONS
Yale University

JAMES GROSSMAN
American Historical Association

CHARLES HENRY
Council on Library and Information Resources

JAMES HILTON
University of Virginia

EDWARD MACIAS
Washington University in St. Louis

SUSAN MARTIN
University of Tennessee

JOYCE L. OGBURN
University of Utah

SCOTT L. WAUGH
University of California, Los Angeles

JANICE WELBURN
Marquette University

BERNARD F. REILLY, *EX OFFICIO*
Center for Research Libraries

EXECUTIVE COMMITTEE

SARAH MICHALAK, CHAIR
University of North Carolina at Chapel Hill

RICHARD FYFFE
Grinnell College

LESLIE WEIR
University of Ottawa

DEBORAH CARVER
University of Oregon

BERNARD F. REILLY, *EX OFFICIO*
Center for Research Libraries

BUDGET AND FINANCE COMMITTEE

DEBORAH CARVER, CHAIR
University of Oregon

RICK J. SCHWIETERMAN
Online Computer Library Center, Inc.

JAMES A. COGSWELL
University of Missouri – Columbia

PAUL COURANT
University of Michigan

QUE NGUYEN
University of Chicago

MARTHA BROGAN
University of Pennsylvania

BERNARD F. REILLY, *EX OFFICIO*
Center for Research Libraries

MEMBERSHIP COMMITTEE

LESLIE WEIR, CHAIR
University of Ottawa

OLIVIA MADISON
Iowa State University

LOUIS PITSCHMANN
University of Alabama

SARA PRITCHARD
Northwestern University

CARTON ROGERS
University of Pennsylvania

VICKI WILLIAMSON
University of Saskatchewan

JOHN G. ZENELIS
George Mason University

BERNARD F. REILLY, *EX OFFICIO*
Center for Research Libraries



NOMINATING COMMITTEE

SARAH MICHALAK, CHAIR
University of North Carolina at Chapel Hill

NANCY ALLEN
University of Denver

BARBARA DEWEY
Pennsylvania State University

BERNARD F. REILLY, *EX OFFICIO*
Center for Research Libraries

VIRGINIA STEEL
University of California, Los Angeles

LESLIE WEIR
University of Ottawa

HUMAN RESOURCES AND COMPENSATION COMMITTEE

SHERRIE SCHMIDT, CHAIR
Arizona State University

CAROLYN HENDERSON-ALLEN
University of Arkansas

MARY CASE
University of Illinois – Chicago

SHEILA JOHNSON
Oklahoma State University

BERNARD F. REILLY, *EX OFFICIO*
Center for Research Libraries

COLLECTIONS AND SERVICES POLICY COMMITTEE

DAN HAZEN, CHAIR
Harvard University

FERN BRODY
University of Pittsburgh

DIANE BRUXVOORT
University of Florida

SHARON FARB
University of California, Los Angeles

SCOTT MACKENZIE
Simon Fraser University

MARY MOLINARO
University of Kentucky

GREG RASCHKE
North Carolina State University

JEANNE RICHARDSON
Arizona State University

BRYAN SKIB
University of Michigan

BERNARD F. REILLY, *EX OFFICIO*
Center for Research Libraries

CRL EXECUTIVE AND MANAGERIAL STAFF

BERNARD F. REILLY
President

YVONNE JEFFERSON
Assistant to the President

RAYMOND SALLAY
Controller

JAMES SIMON
Director of International Resources, and
Director, Global Resources Network

MARY WILKE
Member Liaison and Outreach Services
Director

AMY WOOD
Director of Technical Services

PATRICIA XIA
Director of Information Systems

KEVIN WILKS
Head, Access Services

PATRICIA FINNEY
Head, Stack Management

VIRGINIA KERR
Digital Program Manager

DON DYER
Membership and Communications
Coordinator

SENIOR ADVISORS

ANN OKERSON
Senior Advisor on Electronic Strategies

STEPHEN BOSCH
Global Resources Senior Collection Advisor
on Science, Technology, and Engineering

STEPHEN WILES
LLMC liaison



MEMBER INSTITUTIONS, FY13

listed by the year they first joined CRL

1949	University of Chicago	1971	City University of New York	University of California, Riverside
	University of Illinois at Urbana-Champaign		Columbia University	University of California, San Diego
	Indiana University		University of Tennessee	University of California, Santa Cruz
	University of Iowa	1972		1980
	University of Kansas		University of Arkansas	Carnegie Mellon University
	Michigan State University		University of Windsor	Florida International University
	University of Minnesota	1973		Miami University of Ohio
	Northwestern University		Binghamton University	1981
	Purdue University		Chicago State University	University of Texas at El Paso
1950			University of Denver	1983
	University of Cincinnati		Florida State University	Brigham Young University
	University of Notre Dame		University of Houston	National Humanities Center
	University of Wisconsin		Kansas State University	North Carolina State University
1951			University of Massachusetts	York University
	Wayne State University		McGill University	1985
1953			University of Missouri	Oregon State University
	Ohio State University		University of New Mexico	Utah State University
1957			New York Public Library	Valparaiso University
	Marquette University		University of Pennsylvania	University of Western Ontario
1959			Princeton Theological Seminary	1987
	University of Kentucky		Wright State University	Case Western Reserve University
1962			Yale University	1989
	University of Missouri	1974		College of William and Mary
1963			University of Florida	University of Southern California
	University of Toronto		Lake Forest College	1990
1967			University of Oregon	University of Alabama
	University of British Columbia	1975		1991
	University of California, Los Angeles		Vanderbilt University	University of Maryland, College Park
	Cornell University	1976		Virginia Tech
	Harvard University		University of Akron	1993
	Iowa State University		University of Colorado	University of Alberta
	Loyola University of Chicago		University of Delaware	Bowling Green State University
	University of Pittsburgh		University of Georgia	University of Dayton
	Princeton University		United States Environmental Protection	Duke University
	University of Rochester		Agency	University of North Texas
	University of Utah	1977		1994
1968			University of Arizona	The Claremont Colleges
	Arizona State University		Arkansas State University	Emory University
	Kent State University		DePaul University	George Mason University
	Washington University in St. Louis		University of North Carolina	Marion Technical College
	Western Michigan University		University of South Carolina	1996
1969			Stony Brook University	Belmont College
	Antioch University		University of Texas–Austin	Cedarville University
	University of California, Santa Barbara		Tulane University	Central State University
	Carleton University		University of Virginia	Cincinnati State Technical and Community
	University of Hawaii at Manoa	1978		College
	Northern Illinois University		Colby College	Clark State Community College
	Ohio University		University of Massachusetts Amherst	Columbus State Community College
1970			Middlebury College	Cuyahoga Community College
	Cleveland State University		University of Oklahoma	Denison University
	Florida Atlantic University		Oklahoma State University	Edison Community College
	University of Illinois at Chicago		University of Vermont	Hocking College
	University of Michigan		University of Washington	Eastern Gateway Community College
	Rutgers, The State University of New Jersey	1979		Kenyon College
	Temple University		University of California, Berkeley	Lakeland Community College
	Texas A & M University		University of California, Davis	Lorain County Community College
			University of California, Irvine	College of Mount St. Joseph
				Mount Vernon Nazarene University
				New York University

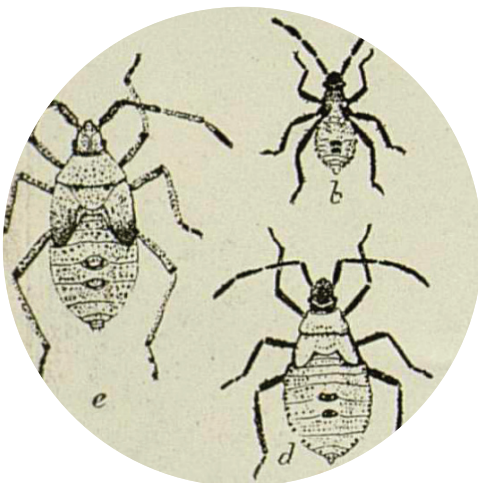
Northeast Ohio Medical University
 Northwest State Community College
 OhioLINK
 University of Ottawa
 Rio Grande Community College
 Shawnee State University
 Southern State Community College
 State Library of Ohio
 Terra Community College
 University of Toledo
 College of Wooster
 Xavier University
 Youngstown State University
 1997
 Capital University
 Central Ohio Technical College
 Hiram College
 Muskingum College
 North Central State College
 Ohio Northern University
 Ohio Wesleyan University
 Owens Community College
 Sinclair Community College
 Stark State College of Technology
 Wittenberg University
 1998
 University of Calgary
 Paul H. Nitze School of Advanced
 International Studies at Johns Hopkins
 University
 Ursuline College
 1999
 Ashland University
 The Athenaeum of Ohio
 Baldwin Wallace
 Bluffton University
 Defiance College
 The University of Findlay
 Franciscan University of Steubenville
 Heidelberg University
 John Carroll University
 Malone University
 Mount Carmel College of Nursing
 University of Mount Union
 Oberlin College

Ohio Dominican University
 Otterbein University
 Pennsylvania State University
 Texas Tech University
 University of Texas at San Antonio
 Tiffin University
 Washington State Community College
 Wilberforce University
 Wilmington College
 2000
 University of Victoria
 2005
 Carleton College
 Colorado College
 Georgia State University
 Grinnell College
 Knox College
 Monmouth College
 2006
 University of Connecticut
 University of Manitoba
 University of South Florida
 2008
 Athabasca University
 Brock University
 Canisius College
 Chancellor University
 Cincinnati Christian University
 Cleveland Clinic
 Colgate University
 Columbus College of Art and Design
 Dartmouth College
 Field Museum
 Franklin University
 Lakehead University
 Le Moyne College
 Lourdes University
 Marietta College
 McMaster University
 Mercy College of Ohio
 Notre Dame College
 Ontario College of Art and Design
 Queen's University
 University of Regina
 Rhodes State College
 University of Saskatchewan
 Siena College
 Simon Fraser University
 St. Lawrence University
 Trent University
 Urbana University
 Vassar College
 Walsh University
 Wilfrid Laurier University
 Zane State College

2009
 Adler School of Professional Psychology
 Benedictine University
 Hope College
 The Newberry Library
 The School of the Art Institute of Chicago
 Skidmore College
 2010
 Illinois Wesleyan University
 Millikin University
 2011
 Carroll College
 University of Central Florida
 Georgia Southern University
 University of North Florida
 University of Northern British Columbia
 Olivet Nazarene University
 University of the South
 Williams College
 2012
 Air Force Institute of Technology
 Baruch College—CUNY
 Baylor University
 University of California, Merced
 City University of New York
 College of Staten Island—CUNY
 Graduate Center—CUNY
 Mississippi State University
 National University
 Norwich University
 Queensborough Community College—CUNY
 West Virginia University
 Westminster College
 2013
 Bard College
 Boston College
 Carthage College
 Chicago Botanic Garden
 Kennesaw State University
 University of Nebraska
 Northeastern University
 Presbyterian College
 Rock and Roll Hall of Fame and Museum

GLOBAL MEMBER
 2006
 University of Hong Kong

AFFILIATE MEMBERS
 1981
 Association of Research Libraries (ARL)
 Research Libraries Group (RLG)
 1983
 Online Computer Library Center (OCLC)



AREA MICROFORM and GLOBAL RESOURCES PROJECTS, FY13

CAMP

Afrika-Studiecentrum (Leiden, The Netherlands)
Bodleian Library of Commonwealth & African Studies at Rhodes House
Boston University
University of California, Berkeley
University of California, Los Angeles
University of Cambridge, African Studies Center
University of Chicago
Columbia University
Cornell University
Dartmouth College
Duke University
Emory University
University of Florida
Georgetown University
Harvard University
Harry S. Truman Research Institute, Hebrew University
University of Illinois at Urbana-Champaign
Indiana University
University of Iowa
University of Kansas
Library of Congress
School of Oriental and African Studies, University of London
Michigan State University
University of Michigan
University of Minnesota
New York Public Library
New York University
University of North Carolina
Northwestern University
University of Notre Dame
Ohio State University
Ohio University
University of Pennsylvania
Princeton University
Rutgers University
Scandinavian Institute of African Studies
Stanford University
Syracuse University
Temple University
University of Virginia
University of Wisconsin-Madison
Yale University

AFRICAN AFFILIATES

University of Cape Town
Mountains of the Moon University

CIFNAL

University of Alberta
Universite des Antilles et de la Guyane
Brigham Young University
University of British Columbia
Brown University
University of California, Berkeley
University of California, Los Angeles
University of California, San Diego
University of California, Santa Cruz
University of Chicago
University of Colorado, Boulder
Cornell University
University of Denver
Duke University
University of Florida
Harvard University
University of Illinois at Urbana-Champaign
Indiana University
University of Iowa
John Carter Brown Library
Johns Hopkins University
University of Manitoba
University of Maryland, College Park
University of Michigan
University of Minnesota
New York Public Library
New York University
University of North Carolina
Northwestern University
University of Notre Dame
University of Ottawa
Pennsylvania State University
University of Pennsylvania
Princeton University
Reed College
Stanford University
University of Toronto
University of Utah
Vanderbilt University
University of Vermont
University of Washington
University of Wisconsin
Yale University
York University

GNARP

University of Alabama
University of Alberta
Brigham Young University
Brown University
University of California, Berkeley
University of California, Irvine
University of California, Los Angeles
University of California, San Diego
University of California, Santa Cruz
University of Chicago
University of Cincinnati
University of Colorado, Boulder
Cornell University
Dartmouth College
University of Delaware
Duke University
Georgetown University
Harvard University
University of Illinois at Urbana-Champaign
Indiana University
University of Iowa
Johns Hopkins University
University of Kentucky
Library of Congress
University of Manitoba
University of Maryland, College Park
University of Michigan
Michigan State University
University of Minnesota
New York University
University of North Carolina
Northwestern University
University of Notre Dame
Pennsylvania State University
University of Pennsylvania
Princeton University
Rice University
Rutgers University
Stanford University
University of Toronto
University of Utah
Vanderbilt University
Washington University in St. Louis
University of Washington
University of Waterloo
University of Wisconsin-Madison
Yale University

GERMAN PARTNERS

Bayerische Staatsbibliothek
Goethe-Institut, New York
Humboldt Universität zu Berlin
Niedersächsische Staats- und
Universitätsbibliothek Göttingen
Universitätsbibliothek Tübingen
Universitäts- und Landesbibliothek Sachsen-
Anhalt, Halle

LAMP

Brigham Young University
Brown University
University of California, Berkeley
University of California, Irvine
University of California, Los Angeles
University of California, Riverside
University of California, San Diego
University of California, Santa Barbara
University of California, Santa Cruz
University of Chicago
Columbia University
University of Connecticut
Cornell University
Duke University
Emory University
University of Florida
Harvard University
University of Illinois at Urbana-Champaign
Indiana University
University of Iowa
University of Kansas
Library of Congress
University of Massachusetts-Amherst
University of Miami
Michigan State University
University of Michigan
University of Minnesota
University of New Mexico
New Mexico State University
New York Public Library
New York University
University of North Carolina
University of Notre Dame
Ohio State University
University of Pennsylvania
University of Pittsburgh
Princeton University
Rice University
Rutgers University
University of Southern California
Stanford University
University of Texas
University of Toronto
Tulane University
Vanderbilt University
University of Virginia
University of Wisconsin-Madison
Yale University

LARRP

University of Arizona
Arizona State University
Boston College
Brigham Young University
University of California, Berkeley
University of California, Los Angeles
University of California, San Diego
University of California, Santa Barbara
Columbia University
University of Connecticut
Cornell University
Dartmouth College
Duke University
Emory University
University of Florida
Florida International University
Harvard University
University of Illinois at Urbana-Champaign
Indiana University
Inter-American Development Bank
University of Kansas
Library of Congress
University of Massachusetts, Amherst
University of Miami
University of Michigan
Michigan State University
University of Minnesota
University of New Mexico
New York University
University of North Carolina
University of Notre Dame
Ohio State University
Ohio University
University of Pennsylvania
University of Pittsburgh
Princeton University
Rice University
Rutgers University
University of South Florida
University of Southern California
Syracuse University
University of Texas
University of Toronto
Tulane University
Vanderbilt University
University of Wisconsin-Madison
Yale University

LATIN AMERICAN AFFILIATES

Biblioteca Inca
Centro de Investigaciones Regionales de Mesoamerica
Instituto de Estudios Peruanos
Universidad de Puerto Rico, Rio Piedras
Universidade Federal do Rio Grande do Sul
Universidade de San Andres
University of the West Indies/St. Augustine

MEMP

American University in Cairo
American University of Beirut
University of Arizona
Brigham Young University
University of California, Berkeley
University of California, Los Angeles
University of California, Santa Barbara
University of Chicago
Columbia University
Duke University
Georgetown University
Harvard University
University of Illinois at Urbana-Champaign
Indiana University
University of Iowa
Library of Congress
McGill University
University of Michigan
University of Minnesota
New York Public Library
New York University
University of North Carolina
University of Notre Dame
Ohio State University
University of Pennsylvania
Princeton University
University of Southern California
Stanford University
University of Texas
University of Washington
Washington University in St. Louis
Yale University



SAMP

University of British Columbia
 Brown University
 University of California, Berkeley
 University of California, Los Angeles
 University of Chicago
 Columbia University
 Cornell University
 Duke University
 Emory University
 Harvard University
 University of Hawaii
 University of Illinois at Urbana-Champaign
 Indiana University
 University of Iowa
 Kansas State University
 Library of Congress
 Max Planck Institute for Human Development
 University of Michigan
 University of Minnesota
 University of Missouri
 New York Public Library
 New York University
 University of North Carolina
 North Carolina State University
 University of Notre Dame
 Ohio State University
 University of Pennsylvania
 Princeton University
 Rutgers University
 Syracuse University
 University of Texas
 University of Toronto
 University of Virginia
 University of Washington
 Washington University in St. Louis
 University of Wisconsin-Madison
 Yale University

SEAM

Arizona State University
 University of British Columbia
 University of California, Berkeley
 University of California, Irvine
 University of California, Los Angeles
 University of California, Riverside
 University of Chicago
 Columbia University
 Cornell University
 Duke University
 École française d'Extrême-Orient
 Harvard University
 University of Hawaii
 Library of Congress
 University of Michigan
 National Chi Nan University
 University of North Carolina
 Northern Illinois University
 University of Notre Dame
 Ohio University
 University of Oregon
 Princeton University
 Royal Netherlands Institute of Southeast Asian
 and Caribbean Studies (KITLV)
 University of Washington
 University of Wisconsin-Madison
 Yale University

SEEMP

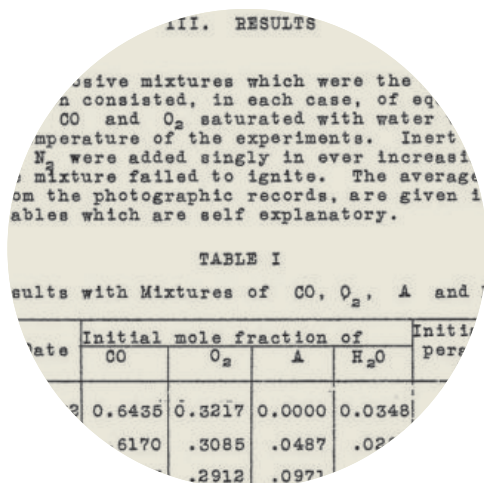
University of Arizona
 Arizona State University
 University of California, Berkeley
 University of California, Los Angeles
 University of Chicago
 Columbia University
 Cornell University
 Duke University
 University of Florida
 George Washington University
 Harvard University
 University of Illinois at Urbana-Champaign
 Indiana University
 University of Iowa
 University of Kansas
 Library of Congress
 University of Michigan
 University of Minnesota
 New York Public Library
 New York University
 University of North Carolina
 University of Notre Dame
 Ohio State University
 University of Pittsburgh
 Princeton University
 Stanford University
 University of Texas
 University of Toronto
 University of Washington
 Yale University

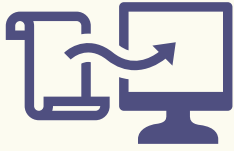
TRAIL

Arizona State University
 University of Arizona
 University of Arkansas
 Baylor University
 Brigham Young University
 University of British Columbia
 California Institute of Technology
 University of California, San Diego
 Colorado State University
 University of Colorado, Boulder
 Georgia Institute of Technology
 Harvard University
 University of Houston
 University of Illinois at Urbana-Champaign
 University of Iowa
 Iowa State University
 University of Kansas
 Kansas State University
 University of Massachusetts, Amherst
 University of Nevada, Las Vegas
 University of New Mexico
 University of North Texas
 University of Notre Dame
 Oklahoma State University
 Princeton University
 Purdue University
 Rice University
 Stanford University
 Texas A & M University
 University of Texas, San Antonio
 Texas Tech University
 Utah State University
 University of Utah
 Washington State University
 University of Washington

GLOBAL RESOURCES NETWORK MEMBERS

Brown University
 George Washington University
 Georgetown University
 Georgia Tech
 Monash University
 Library of Congress (ICON)
 British Library (ICON)





**4.3
million**

*pages digitized to support ongoing research
at CRL libraries*

total institutions as of July 1, 2013



270



179

*different member institutions attending
collections webinars*

Topics included: Agriculture, Licensing Programs, Linda Hall Library

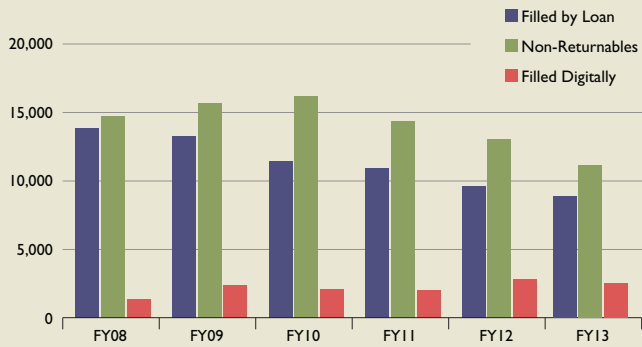
*participants in CRL-negotiated electronic
research resource offers*

For 28 digital collections

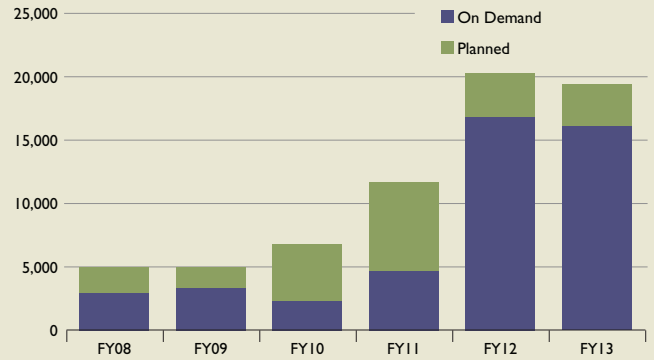


267

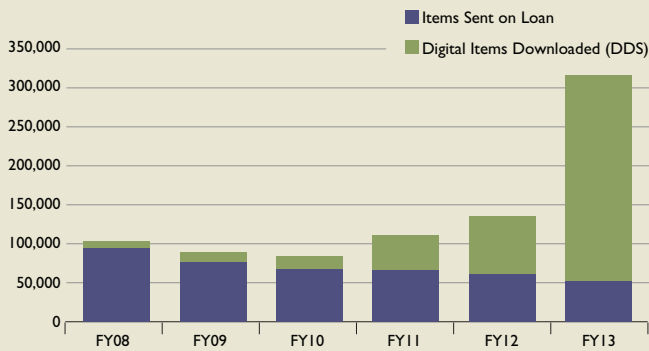
BORROWING REQUESTS FILLED, FY08–13



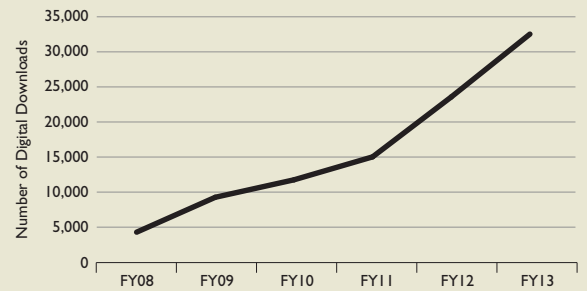
NUMBER OF ITEMS DIGITIZED BY CRL, FY08–13



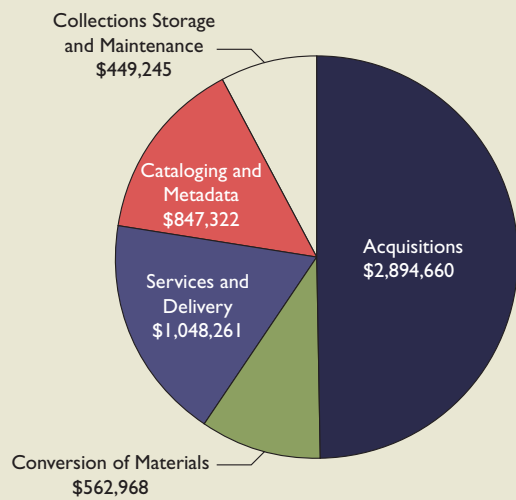
ITEMS SUPPLIED, FY08–13



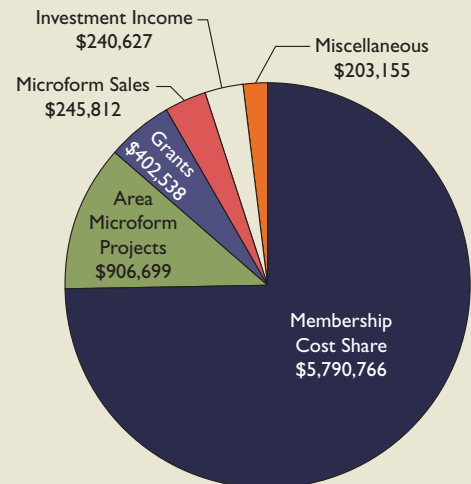
MEMBERS' ACCESS TO CRL DIGITIZED MATERIAL, FY08–13

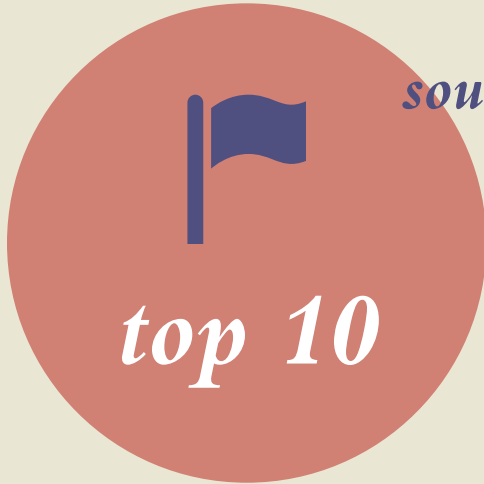


CRL INVESTMENT IN COLLECTIONS AND SERVICES, FY13



CRL REVENUE, FY13





sources of CRL acquisitions in FY13:

- England
- Russia (Federation)
- United States
- Japan
- Germany
- France
- Australia
- Netherlands
- Poland
- Italy
- Austria



REPORT OF INDEPENDENT AUDITORS

To the Board of Directors of
Center for Research Libraries

Report on the Financial Statements

We have audited the accompanying financial statements of Center for Research Libraries (the Center), which comprise the statements of financial position as of June 30, 2013 and 2012, and the related statements of activities and cash flows for the years then ended, and the related notes to the financial statements.

Management's Responsibility for the Financial Statements

Management is responsible for the preparation and fair presentation of these financial statements in accordance with accounting principles generally accepted in the United States of America; this includes the design, implementation, and maintenance of internal control relevant to the preparation and fair presentation of financial statements that are free from material misstatement, whether due to fraud or error.

Auditor's Responsibility

Our responsibility is to express an opinion on these financial statements based on our audits. We conducted our audits in accordance with auditing standards generally accepted in the United States of America. Those standards require that we plan and perform the audit to obtain reasonable assurance about whether the financial statements are free from material misstatement.

An audit involves performing procedures to obtain audit evidence about the amounts and disclosures in the financial statements. The procedures selected depend on the auditor's judgment, including the assessment of the risks of material misstatement of the financial statements, whether due to fraud or error. In making those risk assessments, the auditor considers internal control relevant to the entity's preparation and fair presentation of the financial statements in order to design audit procedures that are appropriate in the circumstances, but not for the purpose of expressing an opinion on the effectiveness of the entity's internal control. Accordingly, we express no such opinion. An audit also includes evaluating the appropriateness of accounting policies used and the reasonableness of significant accounting estimates made by the Center's management, as well as evaluating the overall presentation of the financial statements.

We believe that the audit evidence we have obtained is sufficient and appropriate to provide a basis for our audit opinion.

Opinion

In our opinion, the financial statements referred to above present fairly, in all material respects, the financial position of Center for Research Libraries as of June 30, 2013 and 2012, and the changes in its net assets and its cash flows for the years then ended in accordance with accounting principles generally accepted in the United States of America.

Other Matter

Our audits were conducted for the purpose of forming an opinion on the financial statements as a whole. The accompanying supplementary information on pages 16 through 18 is presented for purposes of additional analysis and is not a required part of the financial statements. Such information is the responsibility of management and was derived from and relates directly to the underlying accounting and other records used to prepare the financial statements. The information has been subjected to the auditing procedures applied in the audits of the financial statements and certain additional procedures, including comparing and reconciling such information directly to the underlying accounting and other records used to prepare the financial statements or to the financial statements themselves, and other additional procedures in accordance with auditing standards generally accepted in the United States of America. In our opinion, the information is fairly stated in all material respects in relation to the financial statements as a whole.

Legacy Professionals LLP

Chicago, Illinois

November 22, 2013

CENTER FOR RESEARCH LIBRARIES

STATEMENTS OF FINANCIAL POSITION

JUNE 30, 2013 AND 2012

	<u>2013</u>	<u>2012</u>
ASSETS		
Cash and cash equivalents	\$ 1,570,948	\$ 1,348,497
Accounts receivable	283,784	271,193
Grants receivable	243,006	203,287
Prepaid expenses and other	574,901	647,237
Deferred financing costs	101,963	110,460
Investments	6,980,923	6,840,945
Property and equipment - net	<u>3,030,403</u>	<u>3,327,855</u>
Total assets	<u>\$ 12,785,928</u>	<u>\$ 12,749,474</u>
LIABILITIES AND NET ASSETS		
LIABILITIES		
Accounts payable and accrued expenses	\$ 806,380	\$ 763,074
Due to database vendors	837,544	-
Deferred revenue	3,778,273	4,236,470
Loan payable	<u>1,160,527</u>	<u>1,255,264</u>
Total liabilities	<u>6,582,724</u>	<u>6,254,808</u>
NET ASSETS		
Unrestricted		
Operating	2,825,894	2,598,783
Area Microform Projects	1,421,729	1,311,284
Net investment in property and equipment	<u>1,869,876</u>	<u>2,072,591</u>
Total	6,117,499	5,982,658
Temporarily restricted	<u>85,705</u>	<u>512,008</u>
Total net assets	<u>6,203,204</u>	<u>6,494,666</u>
Total liabilities and net assets	<u>\$ 12,785,928</u>	<u>\$ 12,749,474</u>

See accompanying notes to financial statements.

Center for Research Libraries
Statements of Activities
Years Ended June 30, 2013 and 2012

	2013			2012		
	Unrestricted	Temporarily Restricted	Total	Unrestricted	Temporarily Restricted	Total
Revenue and other support						
Membership cost share	\$ 5,790,766	\$ -	\$ 5,790,766	\$ 5,585,464	\$ -	\$ 5,585,464
Area Microform Projects	906,669	-	906,669	1,185,974	-	1,185,974
Grants	402,538	-	402,538	450,653	1,005,000	1,455,653
Cataloging revenue	44,597	-	44,597	110,599	-	110,599
Newspaper microfilm sales	79,363	-	79,363	80,383	-	80,383
Microform sales and subscriptions	87,086	-	87,086	63,419	-	63,419
Investment income	240,627	-	240,627	106,261	-	106,261
Other income	100,229	-	100,229	66,248	-	66,248
Net assets released from restrictions	426,303	(426,303)	-	991,017	(991,017)	-
Total revenue and other support	<u>8,078,178</u>	<u>(426,303)</u>	<u>7,651,875</u>	<u>8,640,018</u>	<u>13,983</u>	<u>8,654,001</u>
Expenses						
Program	5,333,247	-	5,333,247	5,405,278	-	5,405,278
Management and general	868,306	-	868,306	723,912	-	723,912
Fundraising	133,290	-	133,290	112,397	-	112,397
Total expenses	<u>6,334,843</u>	<u>-</u>	<u>6,334,843</u>	<u>6,241,587</u>	<u>-</u>	<u>6,241,587</u>
Change in net assets before changes related to collection items not capitalized	1,743,335	(426,303)	1,317,032	2,398,431	13,983	2,412,414
Collection items purchased and not capitalized	<u>1,608,494</u>	<u>-</u>	<u>1,608,494</u>	<u>1,372,896</u>	<u>-</u>	<u>1,372,896</u>
Change in net assets	134,841	(426,303)	(291,462)	1,025,535	13,983	1,039,518
Net assets						
Beginning of year	<u>5,982,658</u>	<u>512,008</u>	<u>6,494,666</u>	<u>4,957,123</u>	<u>498,025</u>	<u>5,455,148</u>
End of year	<u>\$ 6,117,499</u>	<u>\$ 85,705</u>	<u>\$ 6,203,204</u>	<u>\$ 5,982,658</u>	<u>\$ 512,008</u>	<u>\$ 6,494,666</u>

Center for Research Libraries

Statements of Cash Flows

Years Ended June 30, 2013 and 2012

	<u>2013</u>	<u>2012</u>
Cash flows from operating activities		
Member cost share and non-member fees received	\$ 7,375,465	\$ 7,406,317
Grants and contributions received	362,817	1,434,807
Interest and dividends received	57,771	34,603
Cash paid to suppliers and employees	(5,726,048)	(6,305,037)
Interest paid	<u>(10,699)</u>	<u>(14,750)</u>
Net cash provided by operating activities	<u>2,059,306</u>	<u>2,555,940</u>
Cash flows from investing activities		
Purchase of investments	(607,122)	(5,132,440)
Sale of investments	650,000	-
Purchase of collections	(1,608,494)	(1,372,896)
Purchase of property and equipment	<u>(176,502)</u>	<u>(453,484)</u>
Net cash (used in) investing activities	<u>(1,742,118)</u>	<u>(6,958,820)</u>
Cash flows from financing activities		
Principal payments on loan	<u>(94,737)</u>	<u>(94,737)</u>
Net change in cash and cash equivalents	222,451	(4,497,617)
Cash and cash equivalents		
Beginning of year	<u>1,348,497</u>	<u>5,846,114</u>
End of year	<u>\$ 1,570,948</u>	<u>\$ 1,348,497</u>
Reconciliation of change in net assets to net cash provided by operating activities		
Change in net assets	\$ (291,462)	\$ 1,039,518
Adjustments to reconcile change in net assets to net cash provided by (used in) operating activities		
Collections purchased	1,608,494	1,372,896
Depreciation expense	473,954	479,024
Realized and unrealized (gain) on investments	(182,856)	(71,658)
Amortization of deferred financing cost	8,497	8,497
Changes in operating assets and liabilities		
Accounts receivable	(12,591)	(139,687)
Grants receivable	(39,719)	(20,845)
Prepaid expenses and other	72,336	(388,606)
Accounts payable and accrued expenses	43,306	(105,458)
Due to database vendors	837,544	-
Deferred revenue	<u>(458,197)</u>	<u>382,259</u>
Net cash provided by operating activities	<u>\$ 2,059,306</u>	<u>\$ 2,555,940</u>

See accompanying notes to financial statements.

CENTER FOR RESEARCH LIBRARIES

NOTES TO FINANCIAL STATEMENTS

JUNE 30, 2013 AND 2012

NOTE 1. NATURE OF ACTIVITIES

Center for Research Libraries (the Center) is a membership consortium of institutions with significant academic and research libraries. The Center's mission is to foster and advance scholarly and scientific research through cost-effective, cooperative programs that provide reliable access through traditional and electronic means to unique and unusual collections of library materials in all appropriate formats, international in scope and comprehensive in disciplines.

A majority of the Center's revenue is derived from membership cost share assessments. Other revenue and support consist of grants and sales of materials reproduced.

The following provides a brief description of the Center's program services:

Collections Storage and Maintenance - The Center maintains active and inactive collections consisting of an estimated five million volumes or equivalents in its repository facility. These collections are in paper, microform and electronic media. Activities associated with storage and physical maintenance of the Center's film and paper collections include sorting, shelving, labeling, housing, and binding conservation work. Also included are the costs of maintaining, monitoring and improving the portion of the building dedicated to collections storage, including climate control and other functions.

Acquisitions - This program consists of activities supporting the acquisition and processing of collection materials, including surveying of members on collection needs, selection and subscription costs, ordering, transporting and receiving materials.

Conversion of Materials - The Center preserves unique and at-risk cultural and historical materials through microfilming and digital conversion. Materials are organized, analyzed, collated and shipped to and from service providers by the Center and partner organizations. Film and digital copies are produced and distributed.

Service and Delivery - The Center delivers an estimated 33 million pages of collection materials to member institutions and other clients each year. Activities include receiving and processing requests for the Center's collection materials from member libraries and clients, retrieval and preparation of materials for delivery, shipping, fulfillment of electronic document delivery requests, receipt and re-shelving of returned materials and fulfillment and processing of member purchase requests for individual items.

NOTE 1. NATURE OF ACTIVITIES (CONTINUED)

Cataloging and Metadata - This program involves production and processing of preliminary and final catalog records, finding aids for the Center's collection materials and metadata for electronic resources including those produced and/or acquired by the Center.

Area Microform Projects (AMPS) - This program involves specific support for the Area Microform Projects and other self-funded area studies projects undertaken by the Center for partner organizations. Activities include identification and procurement of materials for preservation, microfilming and digitization as well as conversion and cataloging of those materials.

Grants - The Center receives grants to fund preservation, cataloging, union lists, acquisitions and other activities, either independently or as a partner in cooperative projects. These grants are normally from private philanthropies or from the U.S. federal government.

NOTE 2. SUMMARY OF SIGNIFICANT ACCOUNTING POLICIES

Basis of Accounting - The Center's financial statements are prepared on the accrual basis of accounting in accordance with generally accepted accounting principles.

New Accounting Pronouncement - In May 2011, the Financial Accounting Standards Board (FASB) issued Accounting Standards Update (ASU) No. 2011-04, *Amendments to Achieve Common Fair Value Measurement and Disclosure Requirements in U.S. GAAP and IFRS*, which clarifies and, in some cases, amends the existing guidance for measuring fair value and provides for certain additional disclosures regarding fair value measurements. The guidance is effective for annual reporting periods beginning on or after December 15, 2011. The adoption of this guidance did not have an impact on the Center's financial statements.

Financial Statement Presentation - In order to conform to provisions of generally accepted accounting principles, the Center, as a not-for-profit entity, is required to report information regarding its financial position and activities in three classes of net assets: unrestricted net assets, temporarily restricted net assets, and permanently restricted net assets. Net assets are generally reported as unrestricted unless assets are received from donors with explicit stipulations that limit the use of the asset. The Center has determined that no net assets are permanently restricted as of June 30, 2013 and 2012. Voluntary resolutions by the Board of Directors to designate a portion of the Center's unrestricted net assets for specific purposes do not result in restricted funds. Since designations are voluntary and may be reversed by the Board at any time, Board designated net assets are considered unrestricted net assets.

Cash and Cash Equivalents - Short-term investments are considered to be investments.

NOTE 2. SUMMARY OF SIGNIFICANT ACCOUNTING POLICIES (CONTINUED)

Investments - The investments of the Center are reported at fair value. The fair value of a financial instrument is the amount that would be received to sell that asset (or paid to transfer a liability) in an orderly transaction between market participants at the measurement date (the exit price). Purchases and sales of the investments are reflected on a trade-date basis. Dividend income is recorded on the ex dividend date. Interest income is recorded on the accrual basis.

Accounts and Grants Receivable - Accounts and grants receivable are stated at the amounts that the Center expects to collect from outstanding balances. Bad debts, which are typically minimal, are written off as incurred.

Deferred Financing Costs - The costs incurred in obtaining the Center's loan have been deferred and are being amortized over the life of the loan.

Property and Equipment - Property and equipment with a cost in excess of \$1,000 and a useful life greater than one year are recorded at cost and depreciated using the straight-line method over the estimated useful lives of the assets. Estimated lives range from three to ten years for furniture and equipment and thirty years for building and improvements. Upon sale or retirement, the cost and related accumulated depreciation are eliminated from the respective accounts and the resulting gain or loss is included in the statements of activities. Property and equipment are reviewed for impairment when events or changes in circumstances indicate that the carrying amount of the assets may not be recoverable. There were no impairment charges for the years ended June 30, 2013 or June 30, 2012.

Collections - The Center has an extensive collection of library materials, which is held for research purposes. The materials were acquired through purchases and contributions since the Center's inception. The Center has adopted a policy of not capitalizing collection expenditures in its financial statements.

Purchases of collection items are recorded as decreases in unrestricted net assets in the year in which the items are acquired and a release of temporarily restricted net assets if acquired with such funds. Contributed collection items are not reflected in the financial statements. Proceeds from disposals or insurance recoveries are reflected as increases in the appropriate net asset class.

The collections are subject to a policy that requires proceeds from their sales to be used to acquire other collection items. No collection items were disposed of through sales during the year ended June 30, 2013 and 2012.

Due to Database Vendors - Beginning in 2013 the Center began acting as a conduit on behalf of the members by collecting and then remitting database vendor subscription premiums on their behalf. Payments received in advance are accounted for as due to database vendors at year end.

NOTE 2. SUMMARY OF SIGNIFICANT ACCOUNTING POLICIES (CONTINUED)

Grants and Contributions - Grants and contributions received are recorded as unrestricted or temporarily restricted support, depending on the existence and nature of any donor-imposed restrictions on the use of the funds. Contributions reported as temporarily restricted support are released to unrestricted net assets when the donor restriction expires, that is, when a stipulated time restriction ends or a purpose restriction is accomplished, and are reported in the statements of activities as net assets released from restrictions.

Revenue Recognition - Membership cost share assessments are recognized as revenue during the membership year. Dues received in advance of the membership year are accounted for as deferred revenue at year end. Revenue from cost reimbursement type grants is recognized as grant related costs are incurred. Grant funds received in advance are accounted for as deferred revenue. AMPS funds received for projects during the year are recognized as unrestricted revenue. Those AMPS funds received in advance of the project year are accounted for as deferred revenue.

Allocation of Expenses - The costs of providing the Center's various programs and supporting services have been summarized on a functional basis in the statements of activities. Accordingly, certain costs have been allocated among the programs and supporting services on the basis of management estimates of direct salary expenses, physical space occupied and programs benefited.

Income Taxes - The Center is exempt from federal income taxes under Section 501(c)(3) of the Internal Revenue Code. Accordingly, there is no provision for income taxes recorded in the accompanying financial statements.

The Center files Form 990, *Return of Organization Exempt from Income Tax*. The Center's returns are subject to examination by the Internal Revenue Service until the applicable statute of limitations expires.

Management Estimates and Assumptions - The preparation of financial statements in conformity with accounting principles generally accepted in the United States requires management to make estimates and assumptions that affect the amounts reported in the financial statements and accompanying notes. Actual results could differ from those estimates.

Reclassifications - Certain reclassifications have been made to the prior year amounts to conform to the presentation for the current year.

Subsequent Events - Subsequent events have been evaluated through November 22, 2013, which is the date the financial statements were available to be issued.

NOTE 3. INVESTMENTS

The composition of investments at June 30, 2013 and 2012 is as follows:

	<u>2013</u>	<u>2012</u>
Mutual funds		
Equity	\$ 1,706,192	\$ 1,286,022
Fixed income	1,146,310	829,005
Money market funds	<u>4,128,421</u>	<u>4,725,918</u>
	<u>\$ 6,980,923</u>	<u>\$ 6,840,945</u>

Investment income for the years ended June 30, 2013 and 2012 is as follows:

	<u>2013</u>	<u>2012</u>
Interest and dividends	\$ 57,771	\$ 34,603
Realized and unrealized gains	<u>182,856</u>	<u>71,658</u>
Total investment income	<u>\$ 240,627</u>	<u>\$ 106,261</u>

NOTE 4. FAIR VALUE MEASUREMENTS

The *Fair Value Measurements and Disclosures* Topic of the FASB Accounting Standards Codification established a fair value hierarchy that prioritizes the inputs to valuation techniques used to measure fair value. The hierarchy gives the highest priority to unadjusted quoted prices in active markets for identical assets or liabilities (Level 1 measurements) and the lowest priority to unobservable inputs (Level 3 measurements). The three levels of the fair value hierarchy are described below:

Basis of Fair Value Measurement

- Level 1 Unadjusted quoted prices in active markets that are accessible at the measurement date for identical, unrestricted assets or liabilities

- Level 2 Quoted prices in markets that are not considered to be active or financial instruments for which all significant inputs are observable, either directly or indirectly

- Level 3 Prices or valuations that require inputs that are both significant to the fair value measurement and unobservable

NOTE 4. FAIR VALUE MEASUREMENTS (CONTINUED)

The following tables set forth, by level within the fair value hierarchy, the Center's investment assets at fair value as of June 30, 2013 and 2012. As required, assets and liabilities are classified in their entirety based on the lowest level of input that is significant to the fair value measurement. The Center had no investment assets at fair value classified within Level 3 at June 30, 2013 and 2012.

<u>Fair Value Measurements at 06/30/13 Using</u>				
	<u>Total</u>	<u>Quoted Prices in Active Markets for Identical Assets (Level 1)</u>	<u>Significant Other Observable Inputs (Level 2)</u>	<u>Significant Unobservable Inputs (Level 3)</u>
Mutual funds				
Equity	\$ 1,706,192	\$ 1,706,192	\$ -	\$ -
Fixed income	1,146,310	1,146,310	-	-
Money market funds	<u>4,128,421</u>	<u>-</u>	<u>4,128,421</u>	<u>-</u>
	<u>\$ 6,980,923</u>	<u>\$ 2,852,502</u>	<u>\$ 4,128,421</u>	<u>\$ -</u>

<u>Fair Value Measurements at 06/30/12 Using</u>				
	<u>Total</u>	<u>Quoted Prices in Active Markets for Identical Assets (Level 1)</u>	<u>Significant Other Observable Inputs (Level 2)</u>	<u>Significant Unobservable Inputs (Level 3)</u>
Mutual funds				
Equity	\$ 1,286,022	\$ 1,286,022	\$ -	\$ -
Fixed income	829,005	829,005	-	-
Money market funds	<u>4,725,918</u>	<u>-</u>	<u>4,725,918</u>	<u>-</u>
	<u>\$ 6,840,945</u>	<u>\$ 2,115,027</u>	<u>\$ 4,725,918</u>	<u>\$ -</u>

NOTE 4. FAIR VALUE MEASUREMENTS (CONTINUED)

Level 1 Measurements

The fair values of the mutual funds are determined by reference to the funds' underlying assets, which are principally marketable equity and fixed income securities. Shares held in the mutual funds are traded in active markets on national and international securities exchanges and are valued at closing prices on the last business day of each period presented.

Level 2 Measurements

The money market funds are valued at cost which approximates their fair value.

NOTE 5. PREPAID EXPENSES AND OTHER

Prepaid expenses and other consisted of the following as of June 30, 2013 and 2012:

	<u>2013</u>	<u>2012</u>
Prepaid insurance	\$ 106,639	\$ 113,725
Prepaid library materials	400,820	466,315
Prepaid - other	<u>67,442</u>	<u>67,197</u>
Total prepaid expenses	<u>\$ 574,901</u>	<u>\$ 647,237</u>

In the course of cataloging its dissertations collection, the Center incurs usage fees to access the Online Computer Library Center (OCLC) database. The Center is able to offset these fees from credits received from OCLC for the reciprocal use of the Center. The Center has earned cumulative net credits of \$46,359 as of June 30, 2013. The Center had cumulative net credits of \$56,342 as of June 30, 2012.

NOTE 6. PROPERTY AND EQUIPMENT

Property and equipment consisted of the following as of June 30, 2013 and 2012:

	<u>2013</u>	<u>2012</u>
Land	\$ 128,446	\$ 128,446
Building and improvements	11,107,082	10,957,996
Furniture and equipment	<u>2,064,958</u>	<u>2,037,543</u>
	13,300,486	13,123,985
Less accumulated depreciation	<u>(10,270,083)</u>	<u>(9,796,130)</u>
	<u>\$ 3,030,403</u>	<u>\$ 3,327,855</u>

Depreciation expense was \$473,954 for the year ended June 30, 2013 and \$479,024 for 2012.

NOTE 7. ACCOUNTS PAYABLE AND ACCRUED EXPENSES

Accounts payable and accrued expenses consisted of the following as of June 30, 2013 and 2012:

	<u>2013</u>	<u>2012</u>
Accounts payable	\$ 455,335	\$ 423,372
Accrued vacation	208,870	208,870
Accrued salaries and withholdings	79,119	66,755
Other accrued expenses	<u>63,056</u>	<u>64,077</u>
	<u>\$ 806,380</u>	<u>\$ 763,074</u>

NOTE 8. DEFERRED REVENUE

The Center regularly bills in advance of the upcoming fiscal year for membership cost share assessments and AMPS membership. Those membership payments that are received for future fiscal years are held as deferred revenue to be recognized in the fiscal year for which they will be earned. Occasionally, grant payments received in advance of a future fiscal year are also held as deferred revenue. As of June 30, 2013 and 2012, deferred revenue consisted of follows:

	<u>2013</u>	<u>2012</u>
Deferred membership cost share	\$ 3,569,758	\$ 4,066,318
Deferred subscriptions	190,221	154,037
AMPS deferred revenue	10,678	8,499
Grants deferred	<u>7,616</u>	<u>7,616</u>
	<u>\$ 3,778,273</u>	<u>\$ 4,236,470</u>

NOTE 9. LOAN PAYABLE

In 2001, the Center obtained a \$2,400,000 loan under the Illinois Educational Facilities Authority's Cultural Pooled Financing Program.

The loan is repayable in monthly installments of \$7,895 plus interest at a variable rate based on the underlying municipal bond which is reset on a weekly basis. The interest rate was 2.02% and 1.98% at June 30, 2013 and 2012, respectively. The loan matures in 2025. Interest expense for the years ended June 30, 2013 and 2012 was \$10,698 and \$14,750 respectively.

NOTE 9. LOAN PAYABLE (CONTINUED)

Principal payments are as follows:

Year ending June 30,	
2014	\$ 94,736
2015	94,736
2016	94,736
2017	94,736
2018	94,736
Thereafter	<u>686,847</u>
	<u>\$ 1,160,527</u>

NOTE 10. TEMPORARILY RESTRICTED NET ASSETS

Temporarily restricted net assets arise from grants received from various organizations to support cataloging, microform projects, digitization, digital preservation activities and the purchase of equipment to automate library materials. Net assets were released from donor restrictions by incurring expenses of \$426,303 and \$991,017 in 2013 and 2012, respectively. Grant contributions received that are not expended for their restricted purposes are refundable to the grantor. Temporarily restricted net assets at June 30, 2013 and 2012 are available for the following purposes:

	<u>2013</u>	<u>2012</u>
South Asia survey	\$ 5,881	\$ 5,881
Membership benefits	1,878	1,878
Global resources network 2014	31,222	451,720
Middle East research journals	1,911	1,911
Government documentation digitization project	<u>44,813</u>	<u>50,618</u>
Total	<u>\$ 85,705</u>	<u>\$ 512,008</u>

NOTE 11. PENSION PLAN

The Center has established and made available to its employees a defined contribution money purchase pension plan. Under this plan, funds contributed by the Center and participating employees are used to purchase retirement annuity and death benefit policies for the participants through the Teachers Insurance and Annuity Association and/or the College Retirement Equities Fund. Contributions made by the Center are based on participants' compensation as defined by the plan. The Center's contribution for the years ended June 30, 2013 and 2012 was \$231,281 and \$236,122 respectively.

NOTE 12. RELATED PARTY TRANSACTIONS

The Center earns cataloging revenues from OCLC Online Computer Library Center, Inc. (OCLC) and also purchases cataloging and other services from OCLC. Cataloging revenues were \$44,597 and \$110,599 during the years ended June 30, 2013 and 2012, respectively. Total services purchased from OCLC were approximately \$56,018 and 54,257 for the years ended June 30, 2013 and 2012, respectively.

The Center also routinely provides membership services to educational institutions which happen to employ members of the Board of Directors.

NOTE 13. CONCENTRATION OF CREDIT RISK

The Center maintains its cash balances in financial institutions deemed to be creditworthy. Balances are insured by FDIC up to \$250,000. Balances may at times exceed insured limits. However, the balances are swept nightly into a money market account that is secured by U.S. Government bonds. The Center believes its credit risk to be minimal.

Center for Research Libraries
Schedule of Functional Expenses and Collection Expenditures
Year Ended June 30, 2013

	Collections Storage and Maintenance	Acquisitions	Conversion of Materials	Service and Delivery	Cataloging and Metadata	Area Microform Projects	Grants	Total Program	Management and General	Fundraising	Total
Support services											
Cataloging fees	\$ -	\$ -	\$ -	\$ -	\$ 56,018	\$ -	\$ -	\$ 56,018	\$ -	\$ -	\$ 56,018
Innovative	2,192	46,909	-	-	-	-	-	49,101	-	-	49,101
Microform costs	11,871	15,109	37,773	43,169	-	133,984	1,950	243,856	-	-	243,856
Other support	63,684	148,597	-	212,281	-	56,175	37,255	517,992	-	-	517,992
Total	<u>77,747</u>	<u>210,615</u>	<u>37,773</u>	<u>255,450</u>	<u>56,018</u>	<u>190,159</u>	<u>39,205</u>	<u>866,967</u>	<u>-</u>	<u>-</u>	<u>866,967</u>
Personnel and operations											
Board and Council expense	-	-	-	-	-	-	800	800	27,538	-	28,338
Business expense	82	342	203	498	384	395	10,938	12,842	33,253	49	46,144
Consumable supplies	9,116	28,526	4,315	11,249	4,109	542	111	57,968	10,093	75	68,136
Insurance	3,864	12,711	7,461	11,006	14,400	-	-	49,442	13,623	2,634	65,699
Member relations	-	-	-	-	-	-	-	-	7,619	-	7,619
Memberships	1,092	23,377	-	-	266	-	-	24,735	10,154	-	34,889
Other outside support	3,460	11,284	6,584	9,720	12,586	20,000	195,353	258,987	59,924	2,296	321,207
Personnel	183,515	603,643	354,338	522,696	683,879	87,577	554,253	2,989,901	643,728	125,087	3,758,716
Postage and delivery	29,097	65,290	26,108	40,705	12,933	12	-	174,145	8,897	541	183,583
Printing	-	-	-	-	-	-	-	-	1,900	-	1,900
Special events	-	-	-	-	-	-	2,410	2,410	1,788	-	4,198
Telecommunications	3,876	12,907	3,343	5,413	1,796	-	-	27,335	3,148	68	30,551
Travel	480	10,262	-	-	117	16,131	15,009	41,999	4,795	-	46,794
Total	<u>234,582</u>	<u>768,342</u>	<u>402,352</u>	<u>601,287</u>	<u>730,470</u>	<u>124,657</u>	<u>778,874</u>	<u>3,640,564</u>	<u>826,460</u>	<u>130,750</u>	<u>4,597,774</u>
Plant and other											
Equipment leases	737	1,653	661	1,031	327	-	535	4,944	225	14	5,183
Service contracts	20,478	45,949	18,373	28,646	9,099	-	5,855	128,400	6,259	380	135,039
Repairs	6,109	13,707	5,481	8,545	2,714	-	-	36,556	1,867	113	38,536
Utilities	32,765	73,517	29,397	45,833	14,558	-	-	196,070	10,014	608	206,692
Total	<u>60,089</u>	<u>134,826</u>	<u>53,912</u>	<u>84,055</u>	<u>26,698</u>	<u>-</u>	<u>6,390</u>	<u>365,970</u>	<u>18,365</u>	<u>1,115</u>	<u>385,450</u>
Total operating expenses	<u>372,418</u>	<u>1,113,783</u>	<u>494,037</u>	<u>940,792</u>	<u>813,186</u>	<u>314,816</u>	<u>824,469</u>	<u>4,873,501</u>	<u>844,825</u>	<u>131,865</u>	<u>5,850,191</u>
Interest expense	1,696	3,805	1,522	2,372	754	-	-	10,149	518	31	10,698
Depreciation	75,131	168,578	67,409	105,097	33,382	-	-	449,597	22,963	1,394	473,954
Total expenses before collections	<u>449,245</u>	<u>1,286,166</u>	<u>562,968</u>	<u>1,048,261</u>	<u>847,322</u>	<u>314,816</u>	<u>824,469</u>	<u>5,333,247</u>	<u>868,306</u>	<u>133,290</u>	<u>6,334,843</u>
Collection expenditures - not capitalized											
Materials	-	1,098,946	-	-	-	492,078	-	1,591,024	-	-	1,591,024
Preservation	-	17,470	-	-	-	-	-	17,470	-	-	17,470
Total	<u>\$ 449,245</u>	<u>\$ 2,402,582</u>	<u>\$ 562,968</u>	<u>\$ 1,048,261</u>	<u>\$ 847,322</u>	<u>\$ 806,894</u>	<u>\$ 824,469</u>	<u>\$ 6,941,741</u>	<u>\$ 868,306</u>	<u>\$ 133,290</u>	<u>\$ 7,943,337</u>

Center for Research Libraries
Schedule of Program Revenue and Expenses - Grants
Year Ended June 30, 2013

	Temporarily Restricted Contribution Grants								Total Temporarily Restricted
	CSAL		Notre Dame	Mellon Foundation		CAORC	MacArthur Foundation	University of Arizona	
	Endangered Archives Program	South Asia Survey	Membership Benefits	GRN Planning	GRN 2014	Middle East Research Journals	Electronic Evidence Project	Govt Docs Digitization Project	
Revenue									
Foundations and other	\$ -	\$ -	\$ -	\$ -	\$ -	\$ -	\$ -	\$ -	\$ -
Expenses									
Board/Council travel	-	-	-	-	800	-	-	-	800
FICA	-	-	-	-	15,230	-	-	275	15,505
Medical insurance	-	-	-	-	26,136	-	-	529	26,665
Office Supplies	-	-	-	-	111	-	-	-	111
Other business expense	-	-	-	-	4,874	-	-	-	4,874
Other library support	-	-	-	-	188	-	-	-	188
Outside professional services	-	-	-	-	121,499	-	-	-	121,499
Retirement	-	-	-	-	16,344	-	-	386	16,730
Salaries	-	-	-	-	212,017	-	-	3,857	215,874
SA Salaries	-	-	-	-	1,489	-	-	-	1,489
Special Event	-	-	-	-	2,210	-	-	-	2,210
Staff development	-	-	-	-	2,136	-	-	-	2,136
Travel	-	-	-	-	9,495	-	-	705	10,200
Workmen's compensation	-	-	-	-	4,033	-	-	53	4,086
Total expenses	-	-	-	-	416,562	-	-	5,805	422,367
Change in net assets	-	-	-	-	(416,562)	-	-	(5,805)	(422,367)
Net assets									
Beginning of year	-	5,881	1,878	-	451,720	1,911	-	50,618	512,008
Released for capitalized equipment	-	-	-	-	3,936	-	-	-	3,936
End of year	\$ -	\$ 5,881	\$ 1,878	\$ -	\$ 31,222	\$ 1,911	\$ -	\$ 44,813	\$ 85,705

Center for Research Libraries
Schedule of Program Revenue and Expenses - Grants
Year Ended June 30, 2013

	Fee for Service Grants								Total
	CAORC American Overseas Digital Library	University of Chicago AMISA	Department of Education TICFIA	Library of Congress Preserving News	NSF Long Lived Digital Repositories	University of Chicago DDSA	IMLS ICON Phase 5	IMLS Print Archiving by Discipline	
Revenue									
Federal grants	\$ -	\$ -	\$ -	\$ -	\$ -	\$ -	\$ 124,054	\$ 248,984	\$ 373,038
Foundations and other	29,500	-	-	-	-	-	-	-	29,500
Total revenue	<u>29,500</u>	<u>-</u>	<u>-</u>	<u>-</u>	<u>-</u>	<u>-</u>	<u>124,054</u>	<u>248,984</u>	<u>402,538</u>
Expenses									
Employee benefits	204	-	-	-	-	-	-	-	204
Equipment purchase/non cap	-	-	-	-	-	-	333	203	536
FICA	1,051	-	-	-	-	-	6,243	7,591	14,885
Innovative	-	-	-	-	-	-	1,950	-	1,950
Medical insurance	1,604	-	-	-	-	-	4,954	22,581	29,139
Other business expense	4,452	-	-	-	-	-	292	1,320	6,064
Other library support	-	-	-	-	-	-	-	36,942	36,942
Outside professional services	-	-	-	-	-	-	13,750	60,000	73,750
Retirement	1,328	-	-	-	-	-	5,755	6,890	13,973
SA salaries	-	-	-	-	-	-	18,574	610	19,184
Salaries	14,732	-	-	-	-	-	68,942	105,811	189,485
Service contract	5,855	-	-	-	-	-	-	-	5,855
Staff development	-	-	-	-	-	-	149	891	1,040
Travel	-	-	-	-	-	-	592	4,217	4,809
Workmen's compensation	274	-	-	-	-	-	1,644	1,928	3,846
Total expenses	<u>29,500</u>	<u>-</u>	<u>-</u>	<u>-</u>	<u>-</u>	<u>-</u>	<u>123,178</u>	<u>248,984</u>	<u>401,662</u>
Change in net assets	-	-	-	-	-	-	876	-	876
Net assets									
Beginning of year	-	-	-	-	-	-	-	-	-
Released for capitalized equipment	-	-	-	-	-	-	876	-	876
End of year	<u>\$ -</u>	<u>\$ -</u>	<u>\$ -</u>	<u>\$ -</u>	<u>\$ -</u>	<u>\$ -</u>	<u>\$ -</u>	<u>\$ -</u>	<u>\$ -</u>